

Xinshi Village Emergency Evacuation Map(Jinhu Township,Kinmen County)

NO. 0902003-001



INFORMATION

Location

Population

4749

Emergency Telephone No.

- Emergency Operations Center
- TEL ☎ (082)-332528
- Jinhu Police Station
- TEL ☎ (082)-332559
- JinhuBranch,
- Kinmen County Fire Bureau
- TEL ☎ (082)-332550
- Manager : Zhi-Cheng , Wu
- TEL ☎ 0912-540180.332131

Website for Emergency

- National Fire Agency
- <http://www.nfa.gov.tw>
- Kinmen County Fire Bureau
- <http://www.kfb.gov.tw/>
- Jinhu Township Adminstratio
- <http://www.kinsha.gov.tw>

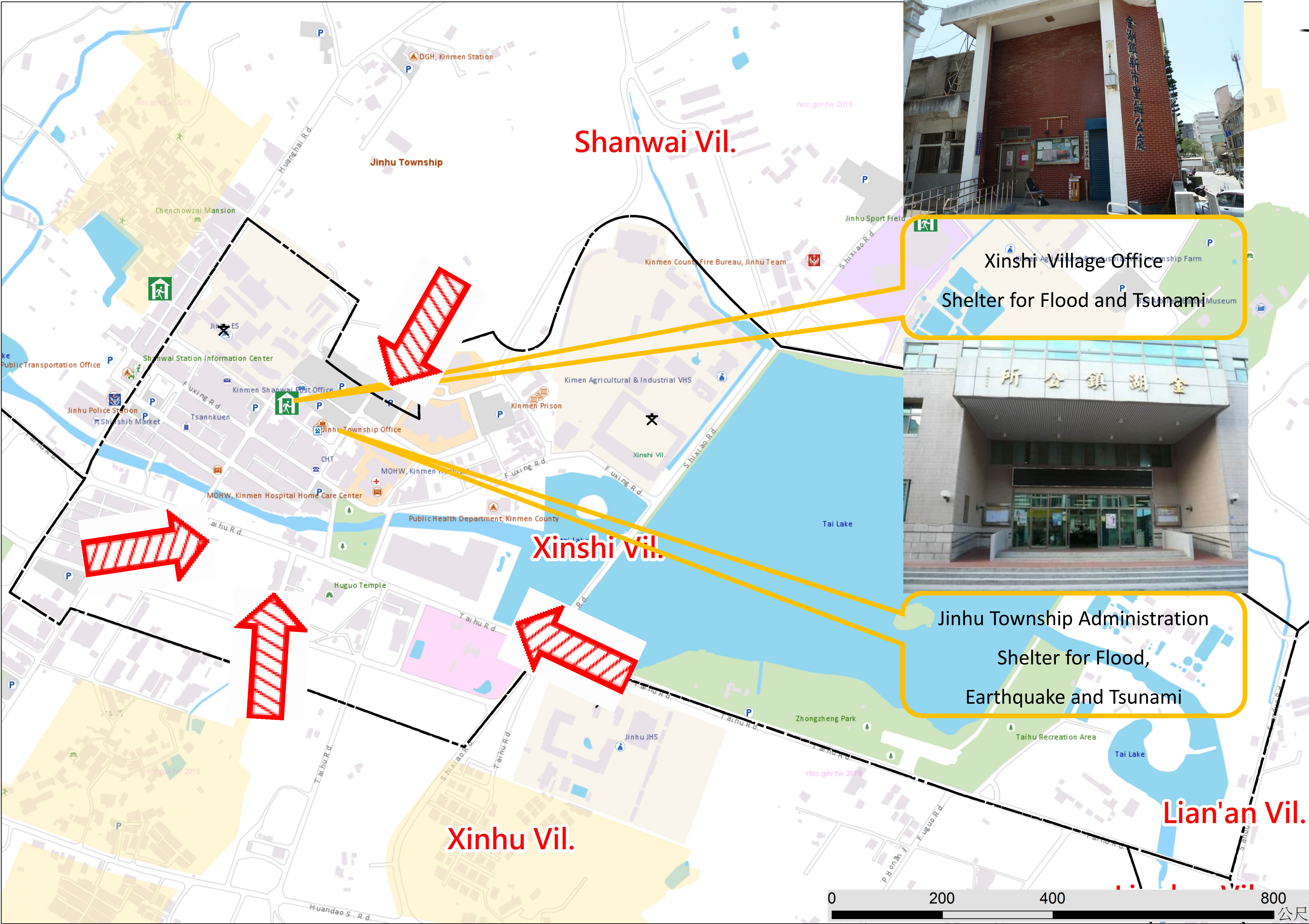
In Case of Disaster

- Earthquake🔍Find open ground
- Flood or Tsunami🔍Go higher ground or take vertical evacuation measures

Emergency Shelter

- ➡ Xinshi Village Office
- No.6, Linsen Rd., Jinhu
- Township, Kinmen County
- 891 , Taiwan (R.O.C.)
- TEL ☎ 0912-540180.332509
- ➡ Jinhu Township Adminstration
- No.2, Linsen Rd., Jinhu
- Township, Kinmen County
- 891,Taiwan (R.O.C.)
- TEL ☎ 0912-281431

Made by Fire Bureau ,  
Kinmen county  
on JUN., 2019



Xinshi Village Office  
Shelter for Flood and Tsunami



Jinhu Township Administration  
Shelter for Flood,  
Earthquake and Tsunami

Legend

Administrative Zone		Signs	Facilities			
--- Township	Water River	Red arrow Evacuation direction	Helicopter landing field	Police station	Township office	Public health center
--- Village		Emergency Shelter(Earthquake)	Vehicle and personnel Rendezvous point	Firefighting Unit	Village office	Welfare institution
--- Township route		Emergency Shelter (Flood)		Landmark	School	Warning signs
--- Rural road		Emergency Shelter (Tsunami)	Emergency relief supplies storage	Indoor shelter	Park	Gas station
--- County route		Emergency Operation Center		Outdoor shelter	Post office	Chunghwa Telecom



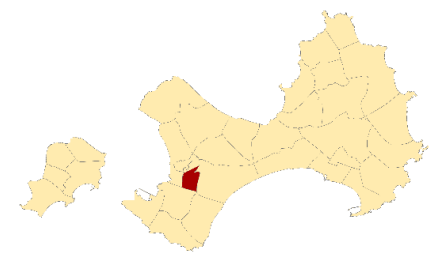
# Shanwai Village Emergency Evacuation Map(Jinhu Township,Kinmen County)

NO. 0902003-002



## INFORMATION

### Location



Population

3774

### Emergency Telephone No.

- Emergency Operations Center
- TEL ☎ (082)-332528
- Jinhu Police Station
- TEL ☎ (082)-332559
- Jinhu Branch,
- Kinmen County Fire Bureau
- TEL ☎ (082)-332550
- Manager : Wen-Kai , Chen
- TEL ☎ 0937-392960.331183

### Website for Emergency

National Fire Agency

- <http://www.nfa.gov.tw>
- Kinmen County Fire Bureau
- <http://www.kfb.gov.tw/>
- Jinhu Township Administration
- <http://www.kinsha.gov.tw>

### In Case of Disaster

- Earthquake Find open ground
- Flood or Tsunami Go higher ground or take vertical evacuation measures

### Emergency Shelter

➔ Xinshi Village Office

- No.1-1, Shanwai, Jinhu
- Township, Kinmen County
- 891 , Taiwan (R.O.C.)



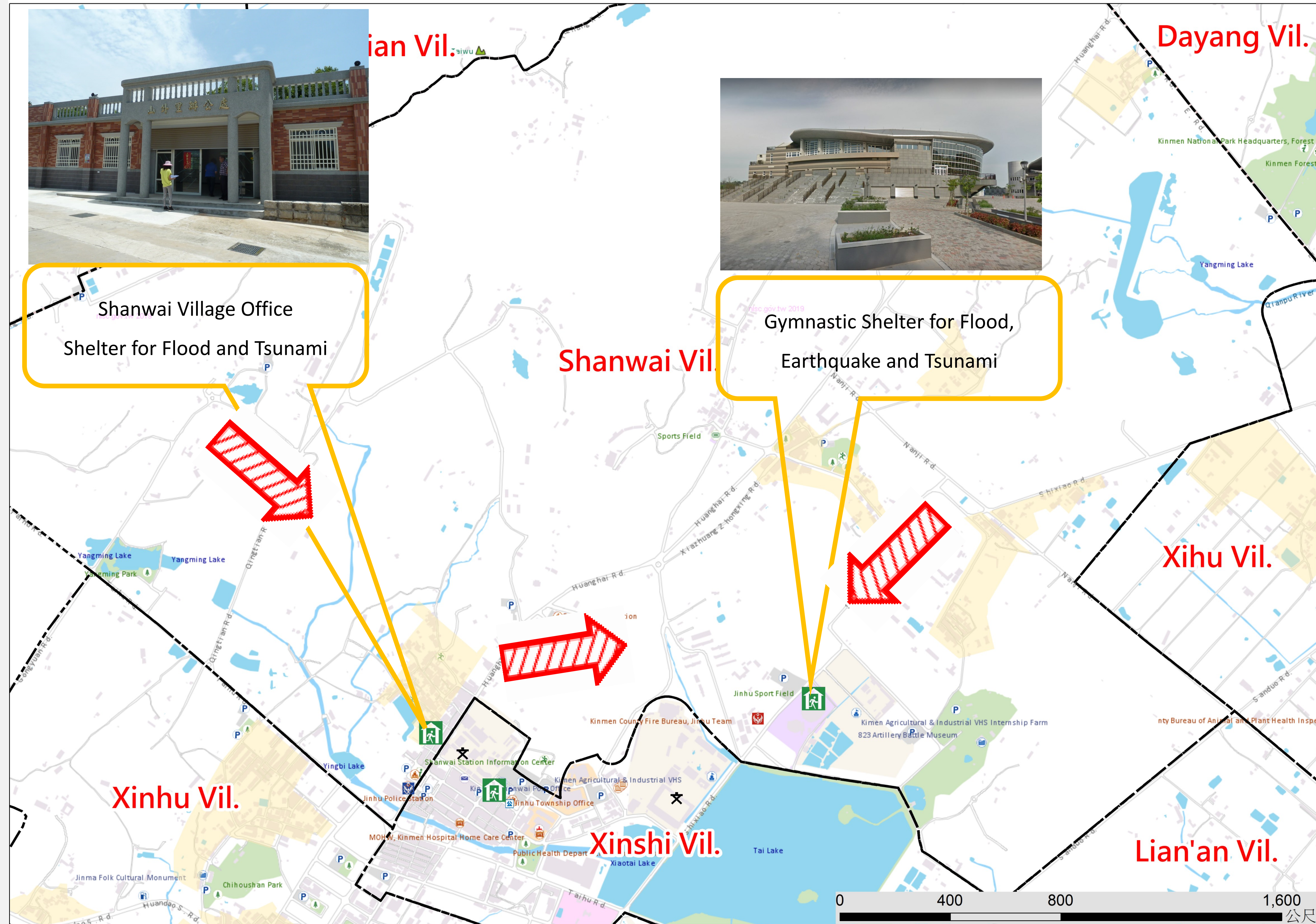
● TEL ☎ 0937-392960.332853

➔ Jinhu Township Administration

- No.2, Linsen Rd., Jinhu
- Township, Kinmen County
- 891,Taiwan (R.O.C.)
- TEL ☎ 0912-281431



Made by Fire Bureau ,  
Kinmen county  
on JUN., 2019



## Legend

Administrative Zone	Signs	Facilities
--- Township	Evacuation direction	Helicopter landing field
--- Village	Emergency Shelter(Earthquake)	Vehicle and personnel Rendezvous point
--- Township route	Emergency Shelter (Flood)	Emergency relief supplies storage
--- Rural road	Emergency Shelter (Tsunami)	
--- County route	Emergency Operation Center	
		Police station
		Firefighting Unit
		Landmark
		Indoor shelter
		Outdoor shelter
		Township office
		Village office
		School
		Park
		Post office
		Public health center
		Welfare institution
		Warning signs
		Gas station
		Chunghwa Telecom



# Zhengyi Village Emergency Evacuation Map(Jinhu Township,Kinmen County)

NO. 0902003-003



## INFORMATION

### Location

Population

2934

### Emergency Telephone No.

- Emergency Operations Center
- TEL ☎ (082)-332528
- Jinhu Police Station
- TEL ☎ (082)-332559
- JinhuBranch,
- Kinmen County Fire Bureau
- TEL ☎ (082)-332550
- Manager : Yan-Wu Chen
- TEL ☎ 0918-917134.333326

### Website for Emergency

- National Fire Agency
- <http://www.nfa.gov.tw>
- Kinmen County Fire Bureau
- <http://www.kfb.gov.tw/>
- Jinhu Township Adminstratio
- <http://www.kinsha.gov.tw>

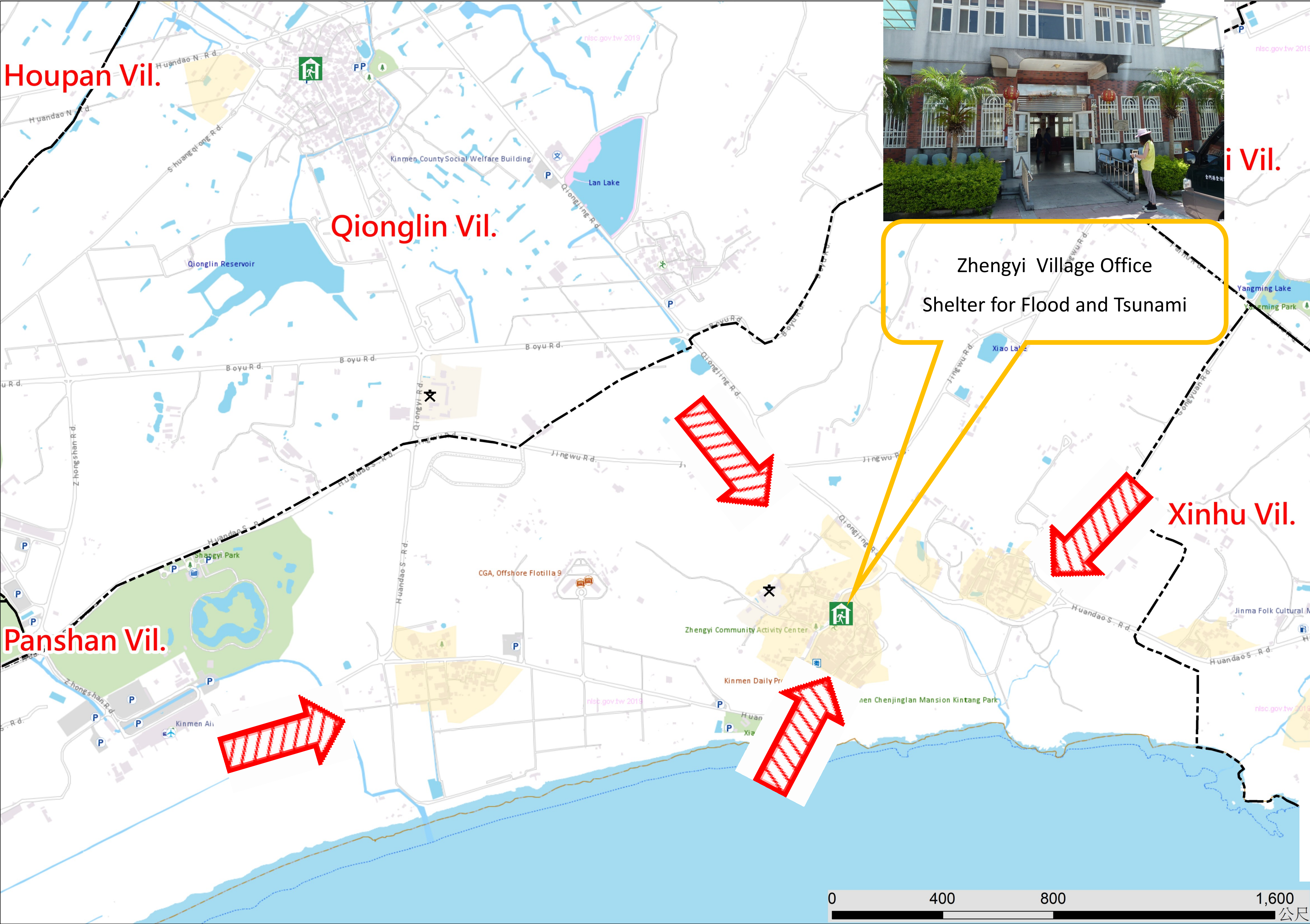
### In Case of Disaster

- Earthquake🔍Find open ground
- Flood or Tsunami🔍Go higher ground or take vertical evacuation measures

### Emergency Shelter

- ➡ Zhengyi Village Office
- No.65-1, Chenggong, Jinhu
- Township,Kinmen County
- 891 , Taiwan (R.O.C.)
- TEL ☎ 0918-917134.332452
- ➡ Jinhu Township Adminstration
- No.2, Linsen Rd., Jinhu
- Township, Kinmen County
- 891,Taiwan (R.O.C.)
- TEL ☎ 0912-281431

Made by Fire Bureau ,  
Kinmen county  
on JUN., 2019



### Legend

Administrative Zone	Signs	Facilities
--- Township	Evacuation direction	Helicopter landing field
--- Village	Emergency Shelter(Earthquake)	Vehicle and personnel Rendezvous point
--- Township route	Emergency Shelter (Flood)	Emergency relief supplies storage
--- Rural road	Emergency Shelter (Tsunami)	
--- County route	Emergency Operation Center	

Police station	Township office	Public health center
Firefighting Unit	Village office	Welfare institution
Landmark	School	Warning signs
Indoor shelter	Park	Gas station
Outdoor shelter	Post office	Chunghwa Telecom

Store



Liaolo Village Emergency Evacuation Map(Jinhu Township,Kinmen County)

NO. 0902003-004



INFORMATION

Location

Population

2552

Emergency Telephone No.

- Emergency Operations Center
- TEL ☎ (082)-332528
- Jinhu Police Station
- TEL ☎ (082)-332559
- JinhuBranch,
- Kinmen County Fire Bureau
- TEL ☎ (082)-332550
- Manager : Qing-Ge , Xie
- TEL ☎ 0926-107040.331732

Website for Emergency

- National Fire Agency
- <http://www.nfa.gov.tw>
- Kinmen County Fire Bureau
- <http://www.kfb.gov.tw/>
- Jinhu Township Adminstratio
- <http://www.kinsha.gov.tw>

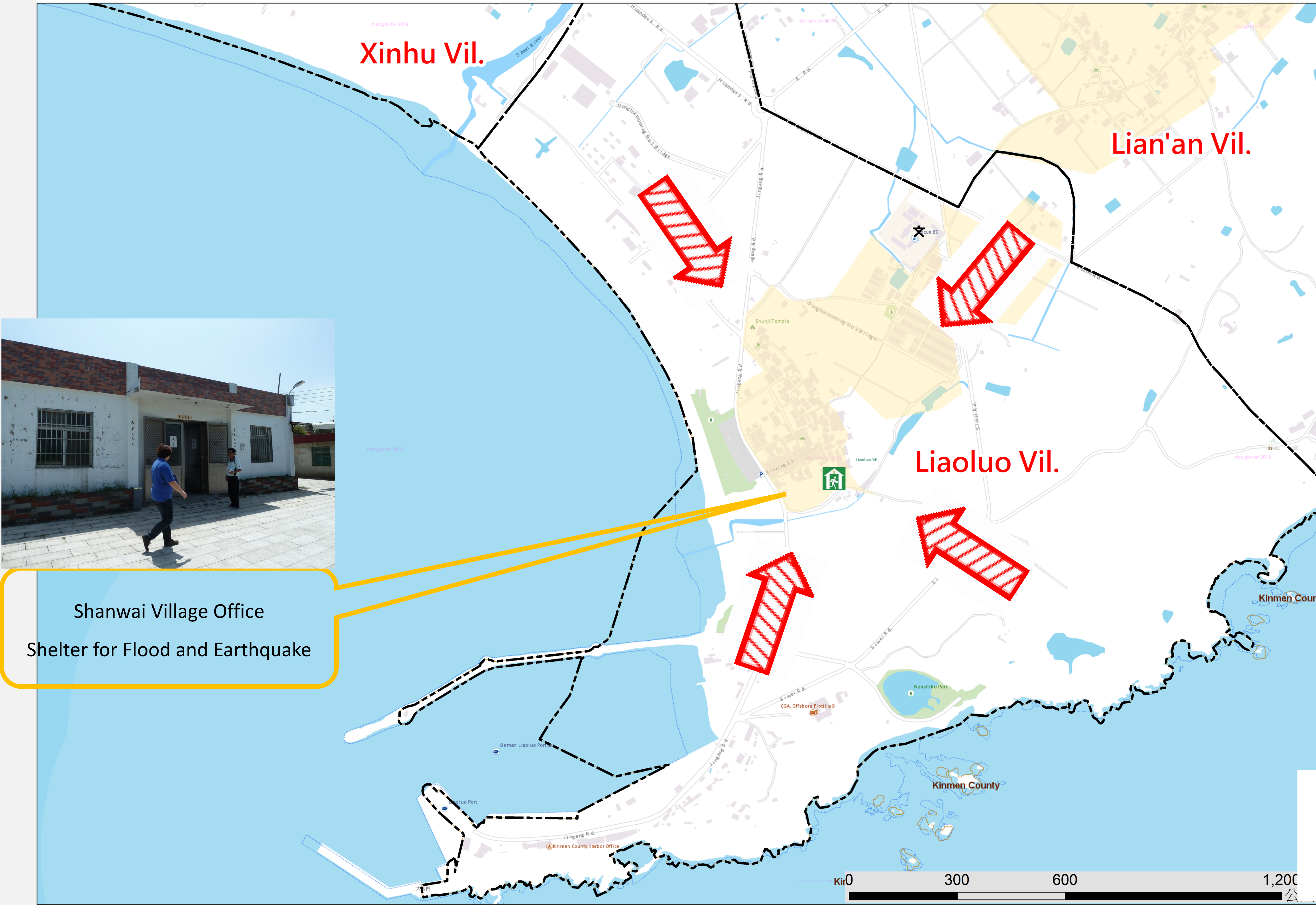
In Case of Disaster

- Earthquake Find open ground
- Flood or Tsunami Go higher ground or take vertical evacuation measures

Emergency Shelter

- ➔ Liaolo Village Office
- No.16-4, Liaoluo, Jinhu
- Township,Kinmen County
- 891 , Taiwan (R.O.C.)
- TEL ☎ 0926-107040.332168
- ➔ Jinhu Township Adminstration
- No.2, Linsen Rd., Jinhu
- Township, Kinmen County
- 891,Taiwan (R.O.C.)
- TEL ☎ 0912-281431

Made by Fire Bureau ,  
Kinmen county  
on JUN., 2019



Legend

Administrative Zone		Signs	Facilities			
--- Township	Water River	Red arrow Evacuation direction	Helicopter landing field	Police station	Township office	Public health center
--- Village		Emergency Shelter(Earthquake)	Vehicle and personnel Rendezvous point	Firefighting Unit	Village office	Welfare institution
--- Township route		Emergency Shelter (Flood)		Landmark	School	Warning signs
--- Rural road		Emergency Shelter (Tsunami)	Emergency relief supplies storage	Indoor shelter	Park	Gas station
--- County route		Emergency Operation Center		Outdoor shelter	Post office	Chunghwa Telecom

Store



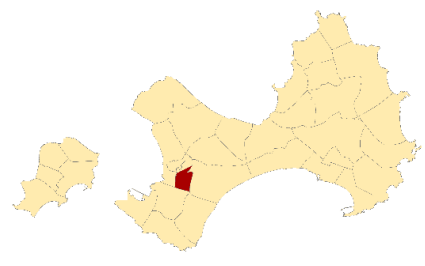
# Qionglin Village Emergency Evacuation Map(Jinhu Township,Kinmen County)

NO. 0902003-005



## INFORMATION

### Location



Population

3616

### Emergency Telephone No.

- Emergency Operations Center
- TEL ☎ (082)-332528
- Jinhu Police Station
- TEL ☎ (082)-332559
- Jinhu Branch,
- Kinmen County Fire Bureau
- TEL ☎ (082)-332550
- Manager : Xian-Ming , Cai
- TEL ☎ 0935-332913.332913

### Website for Emergency

National Fire Agency

- <http://www.nfa.gov.tw>
- Kinmen County Fire Bureau
- <http://www.kfb.gov.tw/>
- Jinhu Township Administration
- <http://www.kinsha.gov.tw>

### In Case of Disaster

- Earthquake Find open ground
- Flood or Tsunami Go higher ground or take vertical evacuation measures

### Emergency Shelter

➔ Qionglin Village Office

● No.236-1, Qionglin, Jinhu

● Township, Kinmen County

● 891 , Taiwan (R.O.C.)

● TEL ☎ 0935-332913.332164

➔ Jinhu Township Administration

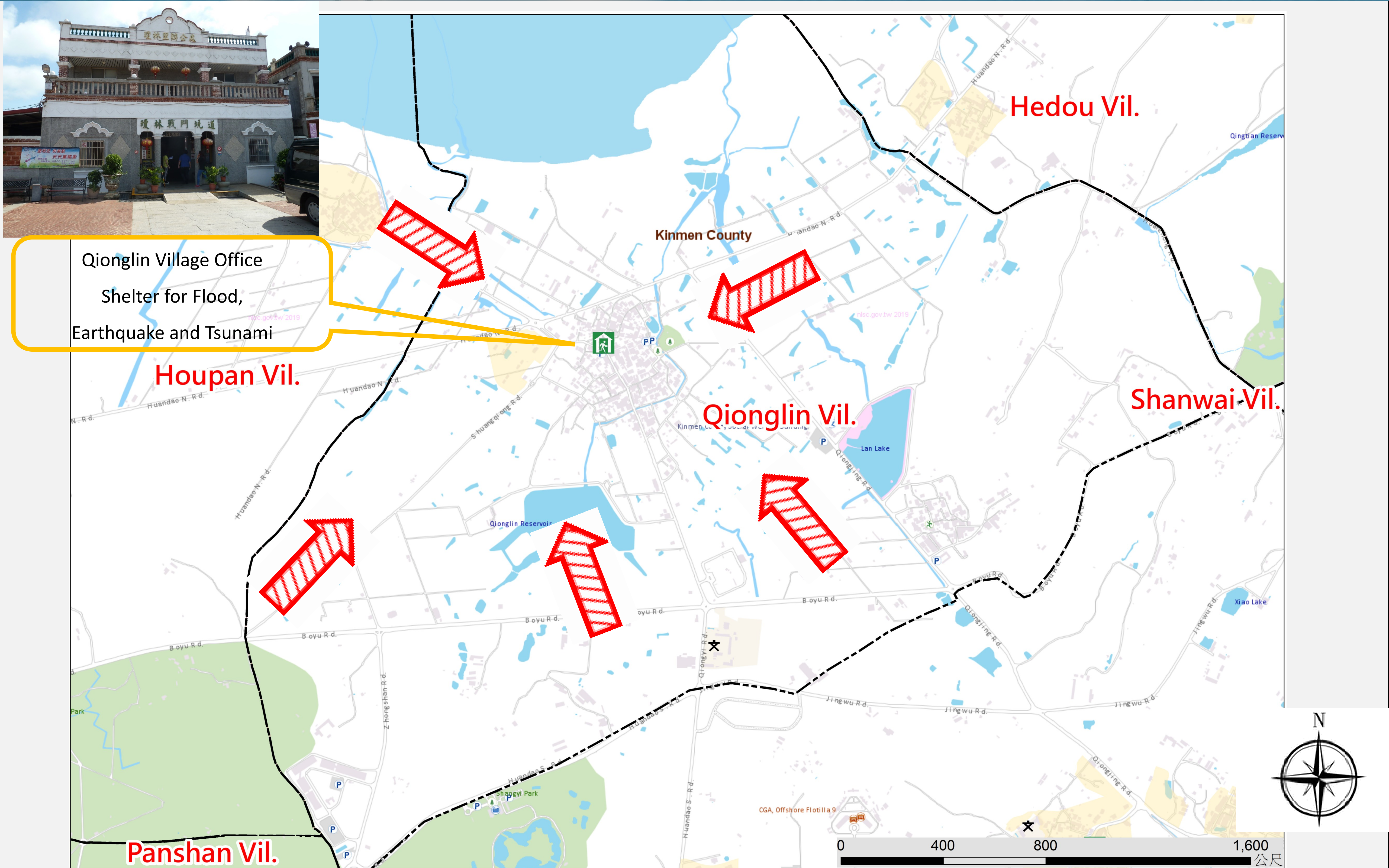
● No.2, Linsen Rd., Jinhu

● Township, Kinmen County

● 891,Taiwan (R.O.C.)

● TEL ☎ 0912-281431

Made by Fire Bureau ,  
Kinmen county  
on JUN., 2019



## Legend

Administrative Zone		Signs	Facilities			
— • — Township	Water River	➔ Evacuation direction	✈ Helicopter landing field	👮 Police station	🏛 Township office	🏠 Public health center
— • • — Village		🏠 Emergency Shelter(Earthquake)	🚚 Vehicle and personnel Rendezvous point	👮 Firefighting Unit	🏠 Village office	🏠 Welfare institution
— Township route		💧 Emergency Shelter (Flood)		🌸 Landmark	🎓 School	⚠ Warning signs
— Rural road		🌊 Emergency Shelter (Tsunami)	🏠 Emergency relief supplies storage	🏠 Indoor shelter	🌳 Park	🛢 Gas station
— County route		🚚 Emergency Operation Center		🏠 Outdoor shelter	📮 Post office	📶 Chunghwa Telecom



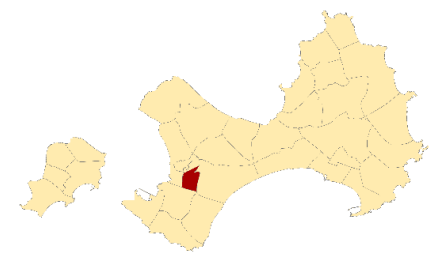
# Xinhu Village Emergency Evacuation Map(Jinhu Township,Kinmen County)

NO. 0902003-006



## INFORMATION

### Location



Population

9108

### Emergency Telephone No.

- Emergency Operations Center
- TEL ☎ (082)-332528
- Jinhu Police Station
- TEL ☎ (082)-332559
- JinhuBranch,
- Kinmen County Fire Bureau
- TEL ☎ (082)-332550
- Manager : CHEN,YING-JHANG
- TEL ☎ 0932-848216.332528

### Website for Emergency

- National Fire Agency
- <http://www.nfa.gov.tw>
- Kinmen County Fire Bureau
- <http://www.kfb.gov.tw/>
- Jinhu Township Adminstratio
- <http://www.kinsha.gov.tw>

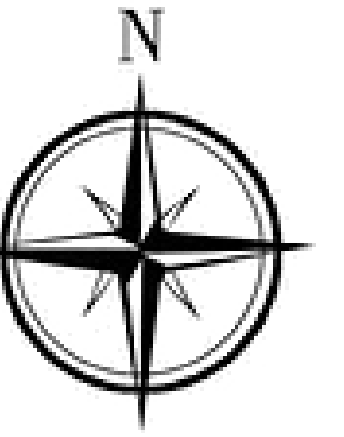
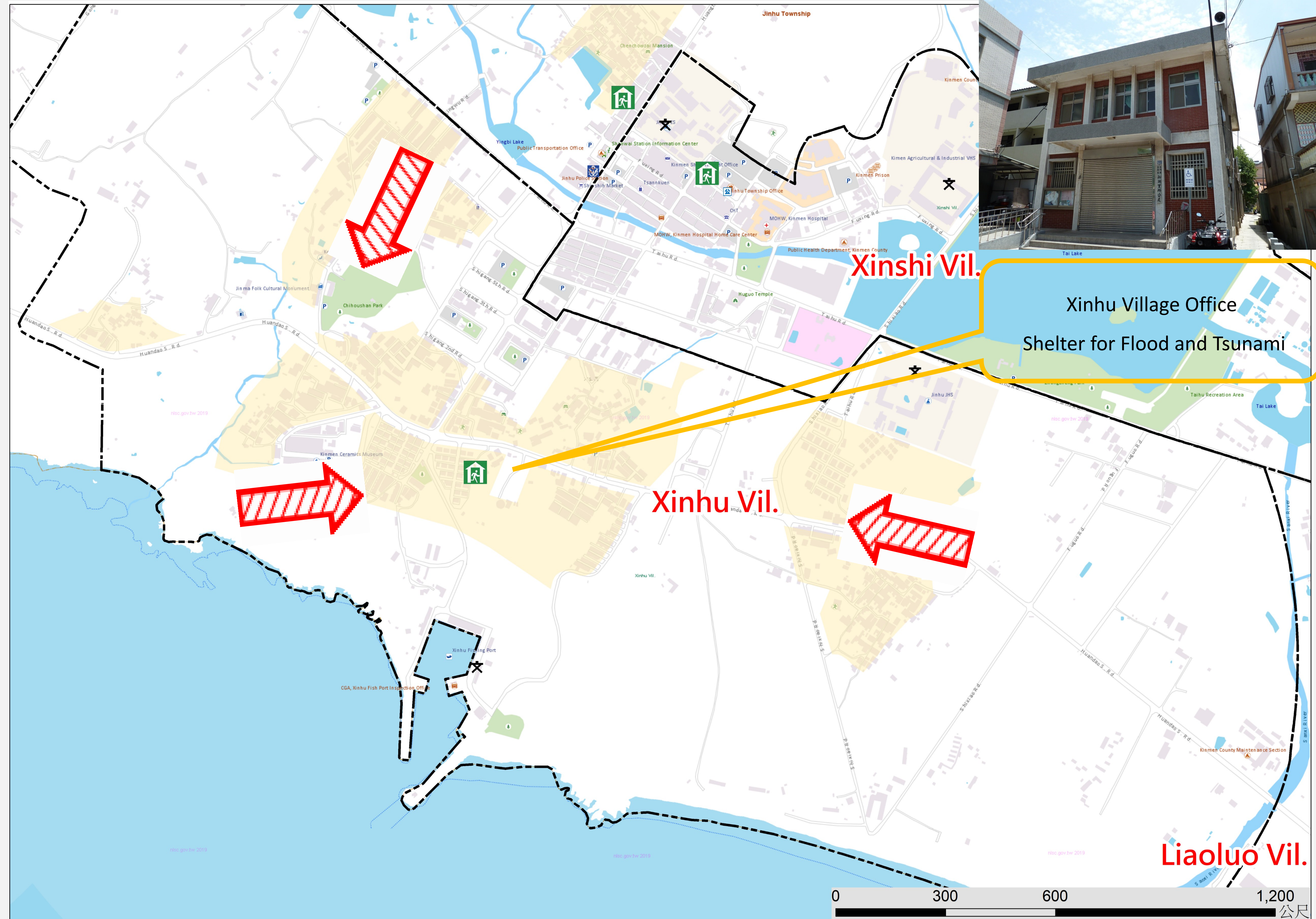
### In Case of Disaster

- Earthquake🔍Find open ground
- Flood or Tsunami🔍Go higher ground or take vertical evacuation measures

### Emergency Shelter

- ➡ Xinhu Village Office
- No.62-1, Huqian, Jinhu
- Township, Kinmen County
- 891 , Taiwan (R.O.C.)
- TEL ☎ 0932-838600.332263
- ➡ Jinhu Township Adminstration
- No.2, Linsen Rd., Jinhu
- Township, Kinmen County
- 891,Taiwan (R.O.C.)
- TEL ☎ 0912-281431

Made by Fire Bureau ,  
Kinmen county  
on JUN., 2019



Xinhu Village Office  
Shelter for Flood and Tsunami

## Legend

Administrative Zone		Signs	Facilities			
--- Township	🌊 River	➡ Evacuation direction	🚁 Helicopter landing field	👮 Police station	🏢 Township office	🏠 Public health center
--- Village		🚒 Emergency Shelter(Earthquake)	🚚 Vehicle and personnel Rendezvous point	👦 Firefighting Unit	🏠 Village office	♿ Welfare institution
— Township route		🌊 Emergency Shelter (Flood)		🌸 Landmark	🎓 School	⚠ Warning signs
— Rural road		🌊 Emergency Shelter (Tsunami)	🏠 Emergency relief supplies storage	🏠 Indoor shelter	🌳 Park	🛢 Gas station
— County route		🚚 Emergency Operation Center		🚶 Outdoor shelter	📮 Post office	📶 Chunghwa Telecom

Store



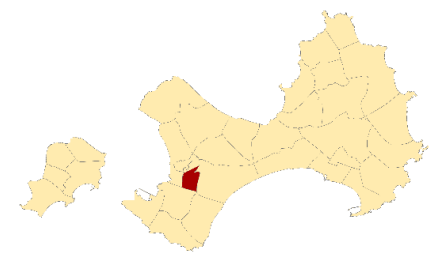
# Xihu Village Emergency Evacuation Map(Jinhu Township,Kinmen County)

NO. 0902003-007



## INFORMATION

### Location



Population

1681

### Emergency Telephone No.

- Emergency Operations Center
- TEL ☎ (082)-332528
- Jinhu Police Station
- TEL ☎ (082)-332559
- Jinhu Branch,
- Kinmen County Fire Bureau
- TEL ☎ (082)-332550
- Manager : HUANG,JIAN-JHONG
- TEL ☎ 0927-190662.332529

### Website for Emergency

National Fire Agency

- <http://www.nfa.gov.tw>
- Kinmen County Fire Bureau
- <http://www.kfb.gov.tw/>
- Jinhu Township Administration
- <http://www.kinsha.gov.tw>

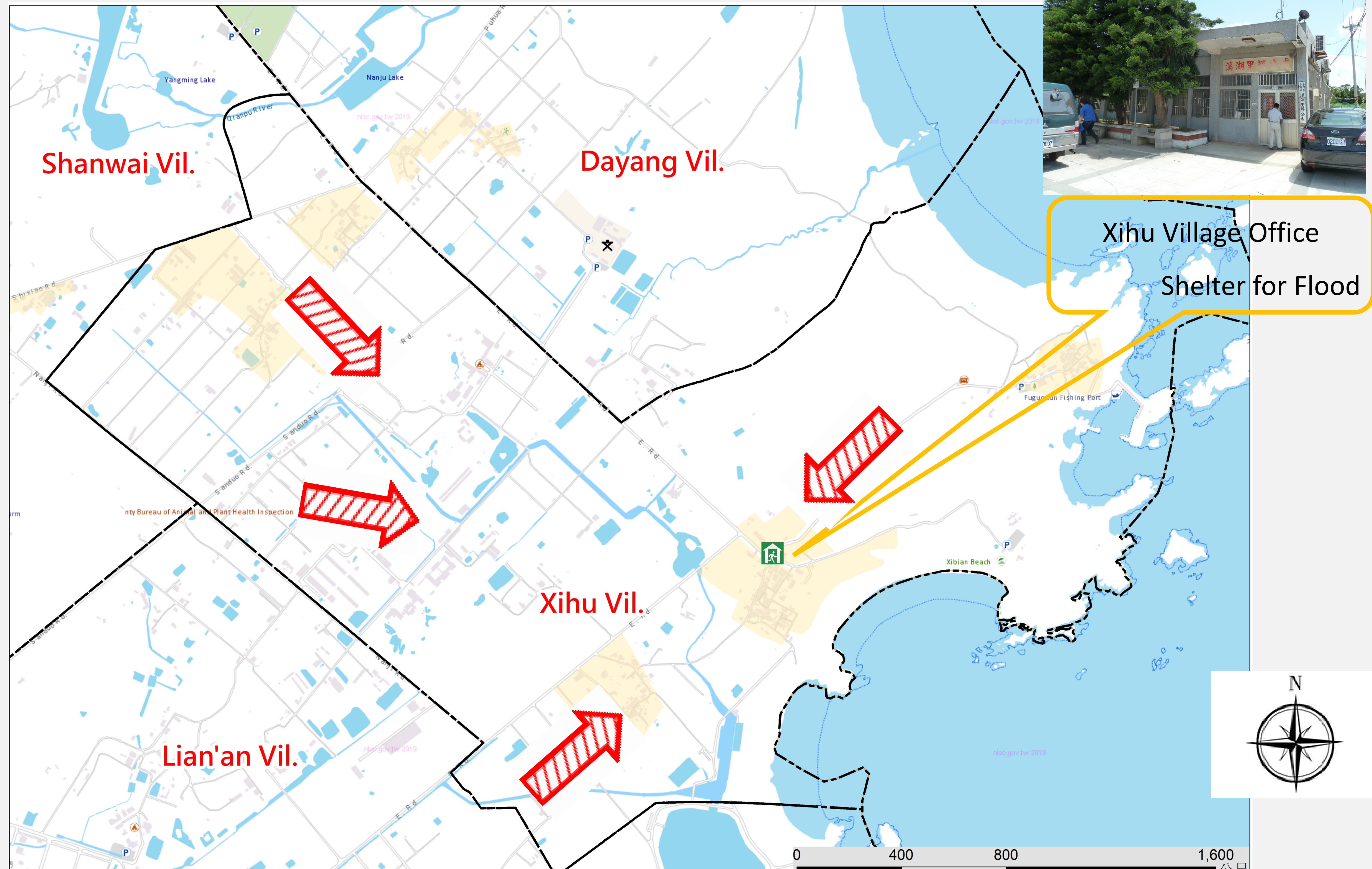
### In Case of Disaster

- Earthquake Find open ground
- Flood or Tsunami Go higher ground or take vertical evacuation measures

### Emergency Shelter

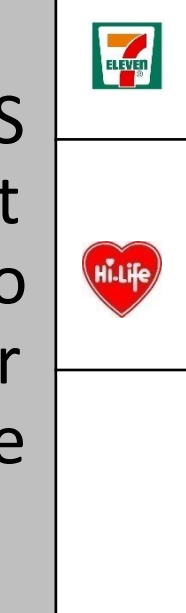
- ➔ Xinshi Village Office
- No.1-1, Shanwai, Jinhu
- Township, Kinmen County
- 891, Taiwan (R.O.C.)
- TEL ☎ 0932-838861.332426
- ➔ Jinhu Township Administration
- No.2, Linsen Rd., Jinhu
- Township, Kinmen County
- 891,Taiwan (R.O.C.)
- TEL ☎ 0912-281431

Made by Fire Bureau ,  
Kinmen county  
on JUN., 2019



## Legend

Administrative Zone		Signs	Facilities			
--- Township	Water River	Red arrow Evacuation direction	Helicopter landing field	Police station	Township office	Public health center
--- Village		Emergency Shelter(Earthquake)	Vehicle and personnel Rendezvous point	Firefighting Unit	Village office	Welfare institution
--- Township route		Emergency Shelter (Flood)		Landmark	School	Warning signs
--- Rural road		Emergency Shelter (Tsunami)	Emergency relief supplies storage	Indoor shelter	Park	Gas station
--- County route		Emergency Operation Center		Outdoor shelter	Post office	Chunghwa Telecom





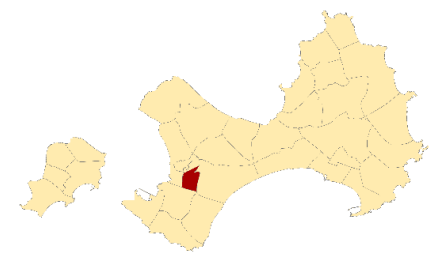
# Lianan Village Emergency Evacuation Map(Jinhu Township,Kinmen County)

NO. 0902003-008



## INFORMATION

### Location



Population

1791

### Emergency Telephone No.

- Emergency Operations Center
- TEL ☎ (082)-332528
- Jinhu Police Station
- TEL ☎ (082)-332559
- JinhuBranch,
- Kinmen County Fire Bureau
- TEL ☎ (082)-332550
- Manager : LYU,YONG-LIN
- TEL ☎ 0909-318825.332265

### Website for Emergency

National Fire Agency

- <http://www.nfa.gov.tw>
- Kinmen County Fire Bureau
- <http://www.kfb.gov.tw/>
- Jinhu Township Adminstratio
- <http://www.kinsha.gov.tw>

### In Case of Disaster

- Earthquake Find open ground
- Flood or Tsunami Go higher ground or take vertical evacuation measures

### Emergency Shelter

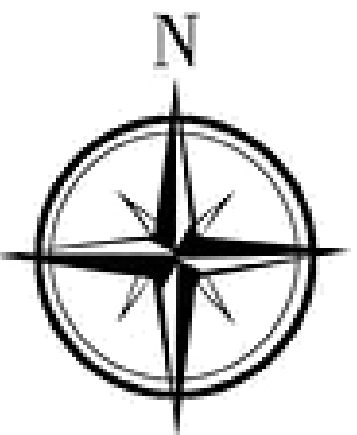
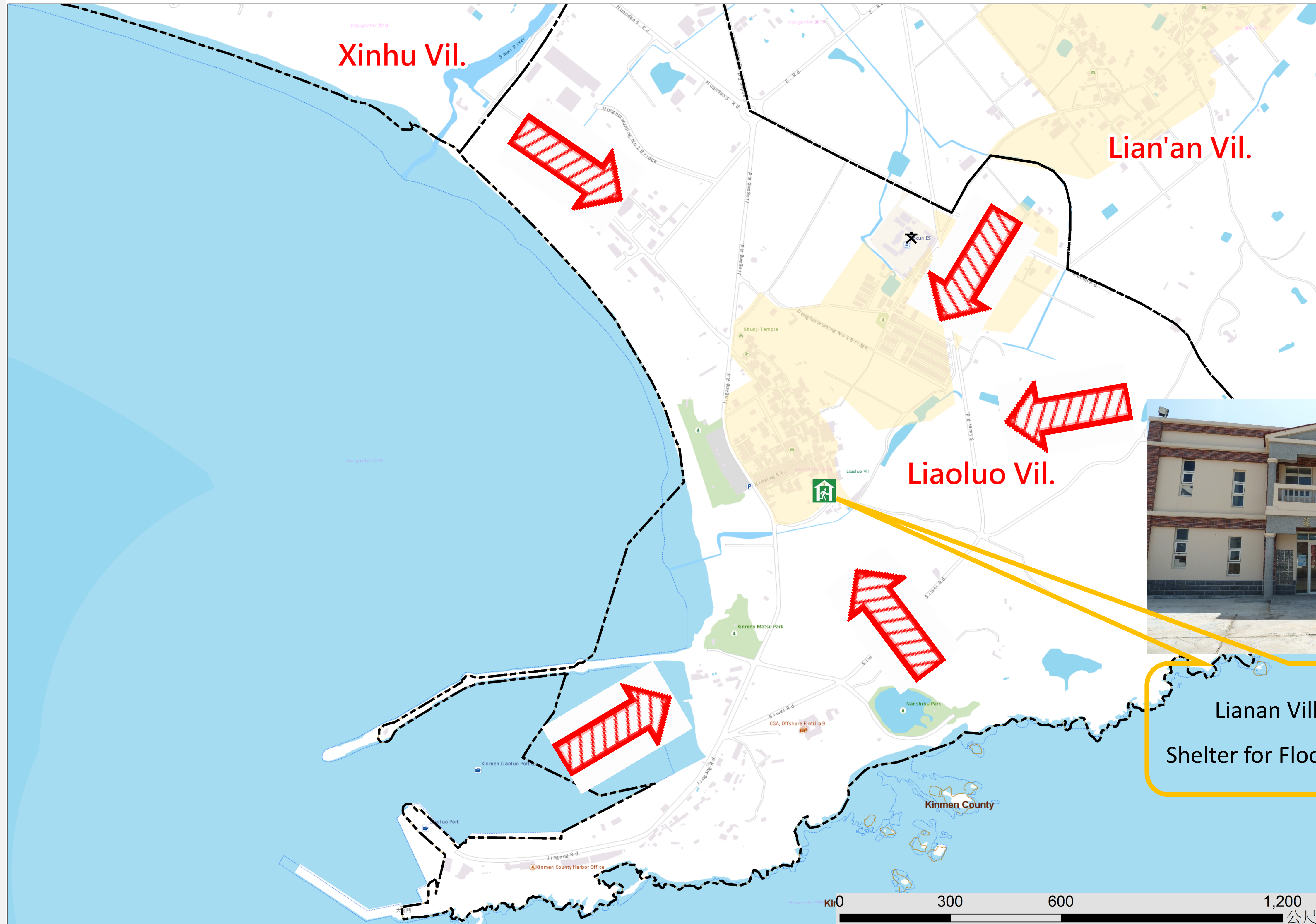
➔ Lianan Village Office

- No.43, E. Vil., Jinhu
- Township, Kinmen County
- 891 , Taiwan (R.O.C.)
- TEL ☎ 332265.332528

➔ Jinhu Township Adminstration

- No.2, Linsen Rd., Jinhu
- Township, Kinmen County
- 891,Taiwan (R.O.C.)
- TEL ☎ 0912-281431

Made by Fire Bureau ,  
Kinmen county  
on JUN., 2019



Lianan Village Office  
Shelter for Flood and Tsunami

## Legend

Administrative Zone		Signs	Facilities			
--- Township	Water River	Evacuation direction	Helicopter landing field	Police station	Township office	Public health center
--- Village		Emergency Shelter(Earthquake)	Vehicle and personnel Rendezvous point	Firefighting Unit	Village office	Welfare institution
--- Township route		Emergency Shelter (Flood)		Landmark	School	Warning signs
--- Rural road		Emergency Shelter (Tsunami)	Emergency relief supplies storage	Indoor shelter	Park	Gas station
--- County route		Emergency Operation Center		Outdoor shelter	Post office	Chunghwa Telecom

Store