

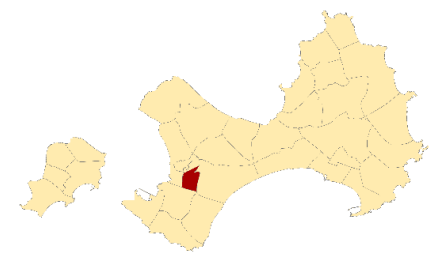
Wensha Village Emergency Evacuation Map(Jinsha Township,Kinmen County)

NO. 0902002-001



INFORMATION

Location



Population

5816

Emergency Telephone No.

- Emergency Operations Center
- TEL ☎ (082)-352150
- Jinsha Police Station
- TEL ☎ (082)-352260
- Jinsha Branch,
- Kinmen County Fire Bureau
- TEL ☎ (082)-352269
- Manager : Han-Long , Chang
- TEL ☎ 0932-987772.352556

Website for Emergency

National Fire Agency

- <http://www.nfa.gov.tw>
- Kinmen County Fire Bureau
- <http://www.kfb.gov.tw/>
- Jinsha Township Adminstratio
- <http://www.kinsha.gov.tw/>

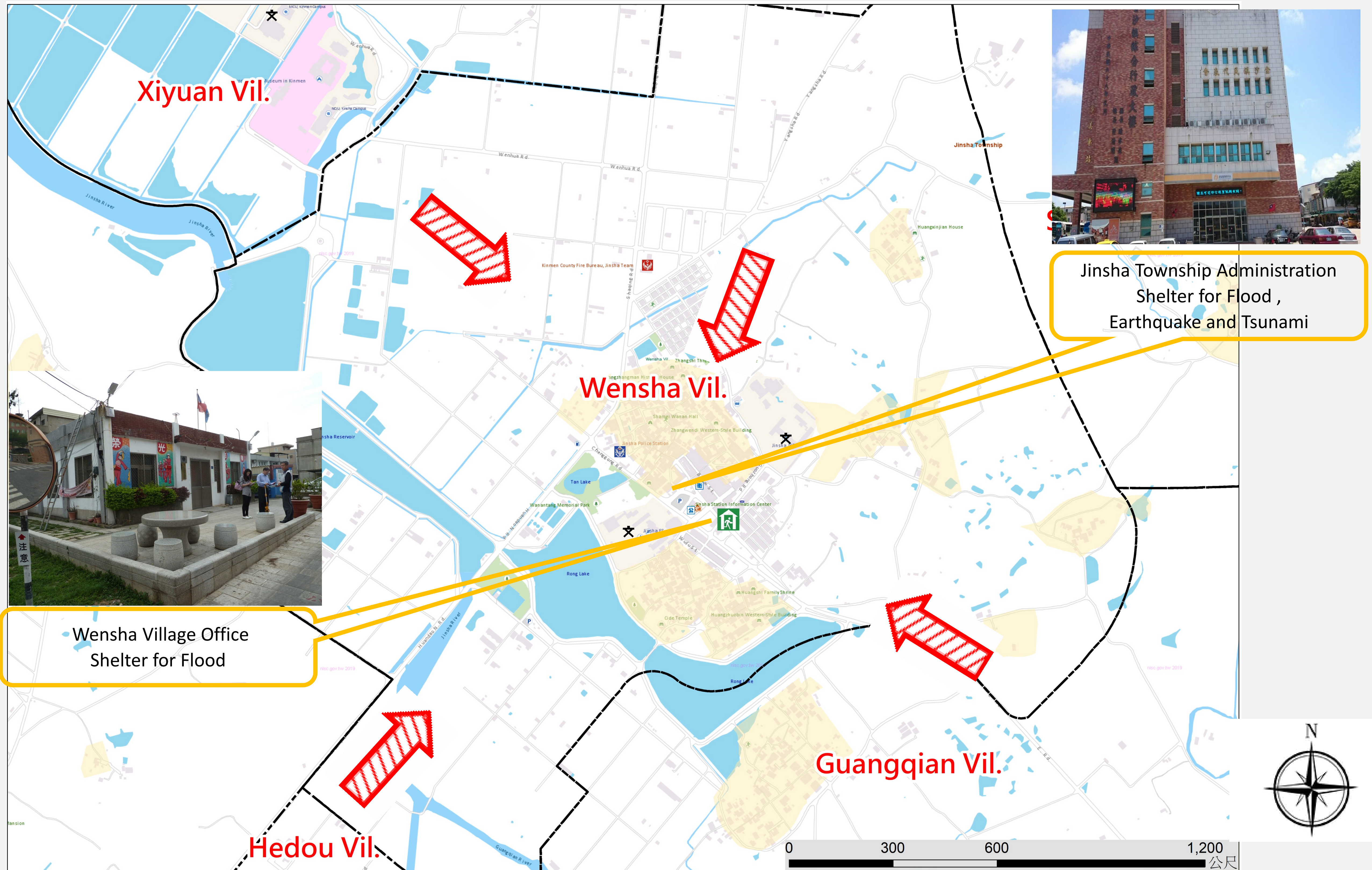
In Case of Disaster

- Earthquake Find open ground
- Flood or Tsunami Go higher ground or take vertical evacuation measures

Emergency Shelter

- ➔ Wensha Village Office
- No.1-1, Guozhong Rd., Jinsha
- Township , Kinmen County
- 890,Taiwan (R.O.C.)
- TEL ☎ 0932-897772.352604
- ➔ Jinsha Township Administration
- No.112,Sec.1, Huandao E.Rd.,
- JinshaTownship , Kinmen County
- 890,Taiwan (R.O.C.)
- TEL ☎ 0910-381150

Made by Fire Bureau ,
Kinmen county
on JUN., 2019



Legend

Administrative Zone		Signs	Facilities				Store
--- Township	Water drop icon River	Red arrow icon Evacuation direction	Helicopter landing field	Police station	Township office	Public health center	
--- Village		Emergency Shelter(Earthquake)	Vehicle and personnel Rendezvous point	Firefighting Unit	Village office	Welfare institution	
--- Township route		Emergency Shelter (Flood)		Landmark	School	Warning signs	
--- Rural road		Emergency Shelter (Tsunami)	Emergency relief supplies storage	Indoor shelter	Park	Gas station	
--- County route		Emergency Operation Center		Outdoor shelter	Post office	Chunghwa Telecom	

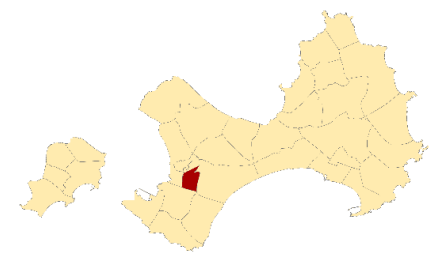
Sanshan Village Emergency Evacuation Map(Jinsha Township,Kinmen County)

NO. 0902002-002



INFORMATION

Location



Population

2075

Emergency Telephone No.

- Emergency Operations Center
- TEL ☎ (082)-352150
- Jinsha Police Station
- TEL ☎ (082)-352260
- Jinsha Branch,
- Kinmen County Fire Bureau
- TEL ☎ (082)-352269
- Manager : Cih-Fa , Chen
- TEL ☎ 0912-616368.353250

Website for Emergency

National Fire Agency

- <http://www.nfa.gov.tw>
- Kinmen County Fire Bureau
- <http://www.kfb.gov.tw/>
- Jinsha Township Adminstratio
- <http://www.kinsha.gov.tw/>

In Case of Disaster

- Earthquake Find open ground
- Flood or Tsunami Go higher ground or take vertical evacuation measures

Emergency Shelter

➔ Senshen Village Office

- No.58-1, Bishan, Jinsha

- Township , Kinmen County

- 890,Taiwan (R.O.C.)



- TEL ☎ 0912-616368.352858

➔ Jinsha Township Adminstration

- No.112,Sec.1, Huandao E.Rd.,

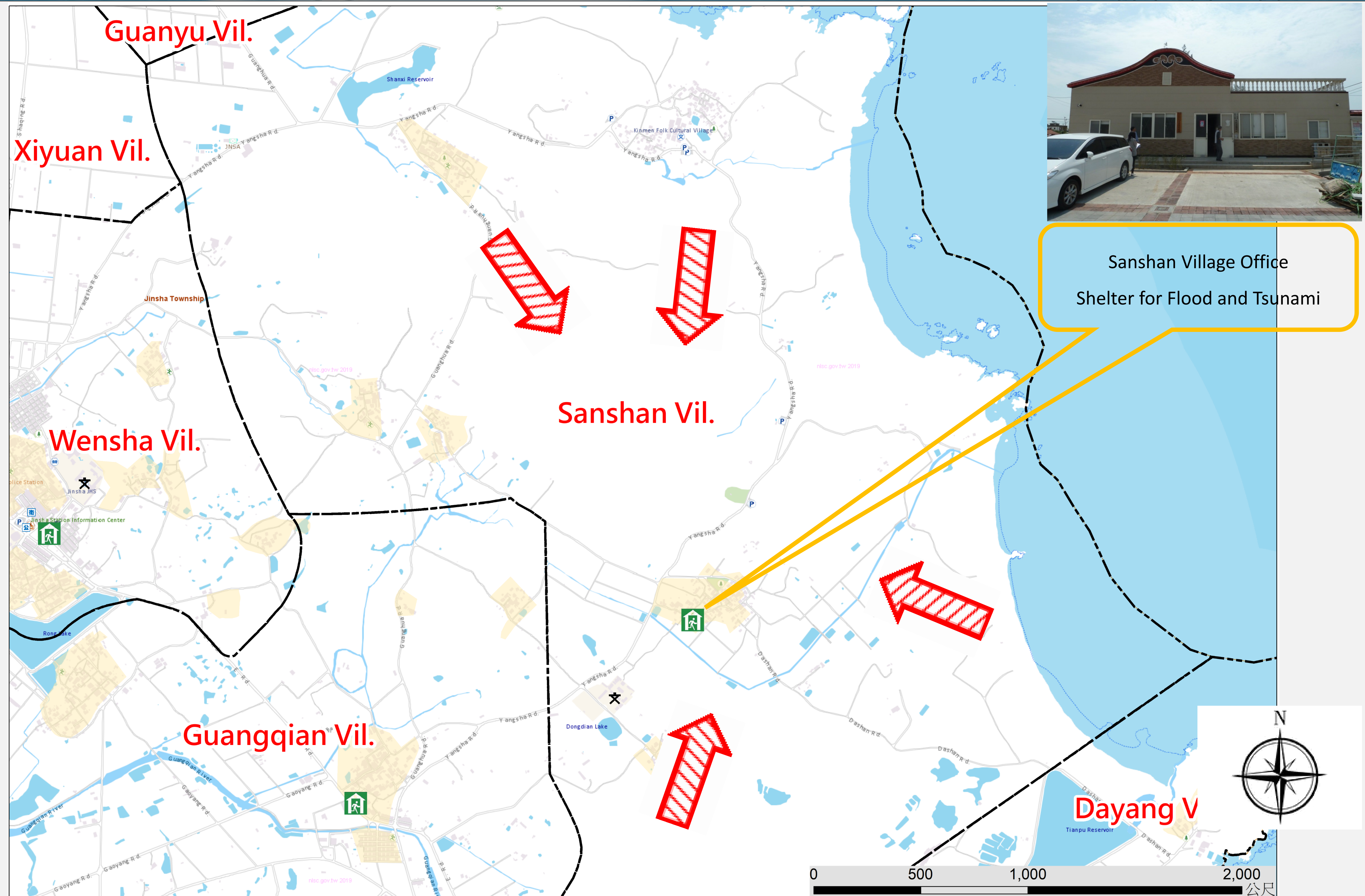
- JinshaTownship , Kinmen County

- 890,Taiwan (R.O.C.)

- TEL ☎ 0910-381150



Made by Fire Bureau ,
Kinmen county
on JUN., 2019



Legend

Administrative Zone		Signs	Facilities			
— · — Township	Water River	➔ Evacuation direction	Helicopter landing field	Police station	Township office	Public health center
— · — Village		Emergency Shelter(Earthquake)	Vehicle and personnel Rendezvous point	Firefighting Unit	Village office	Welfare institution
— Township route		Emergency Shelter (Flood)		Landmark	School	Warning signs
— Rural road		Emergency Shelter (Tsunami)	Emergency relief supplies storage	Indoor shelter	Park	Gas station
— County route		Emergency Operation Center		Outdoor shelter	Post office	Chunghwa Telecom

Store

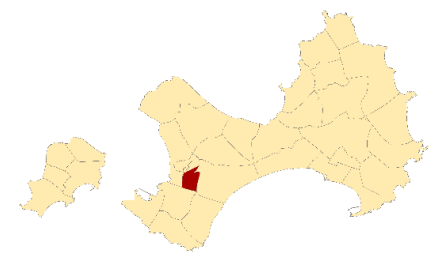
Dayang Village Emergency Evacuation Map(Jinsha Township,Kinmen County)



NO. 0902002-003

INFORMATION

Location



Population

1260

Emergency Telephone No.

- Emergency Operations Center
- TEL ☎ (082)-352150
- Jinsha Police Station
- TEL ☎ (082)-352260
- Jinsha Branch,
- Kinmen County Fire Bureau
- TEL ☎ (082)-352269
- Manager : You-Tai , Wu
- TEL ☎ 0921-588874.335089

Website for Emergency

National Fire Agency

- <http://www.nfa.gov.tw>
- Kinmen County Fire Bureau
- <http://www.kfb.gov.tw/>
- Jinsha Township Adminstratio
- <http://www.kinsha.gov.tw/>

In Case of Disaster

- Earthquake Find open ground
- Flood or Tsunami Go higher ground or take vertical evacuation measures

Emergency Shelter

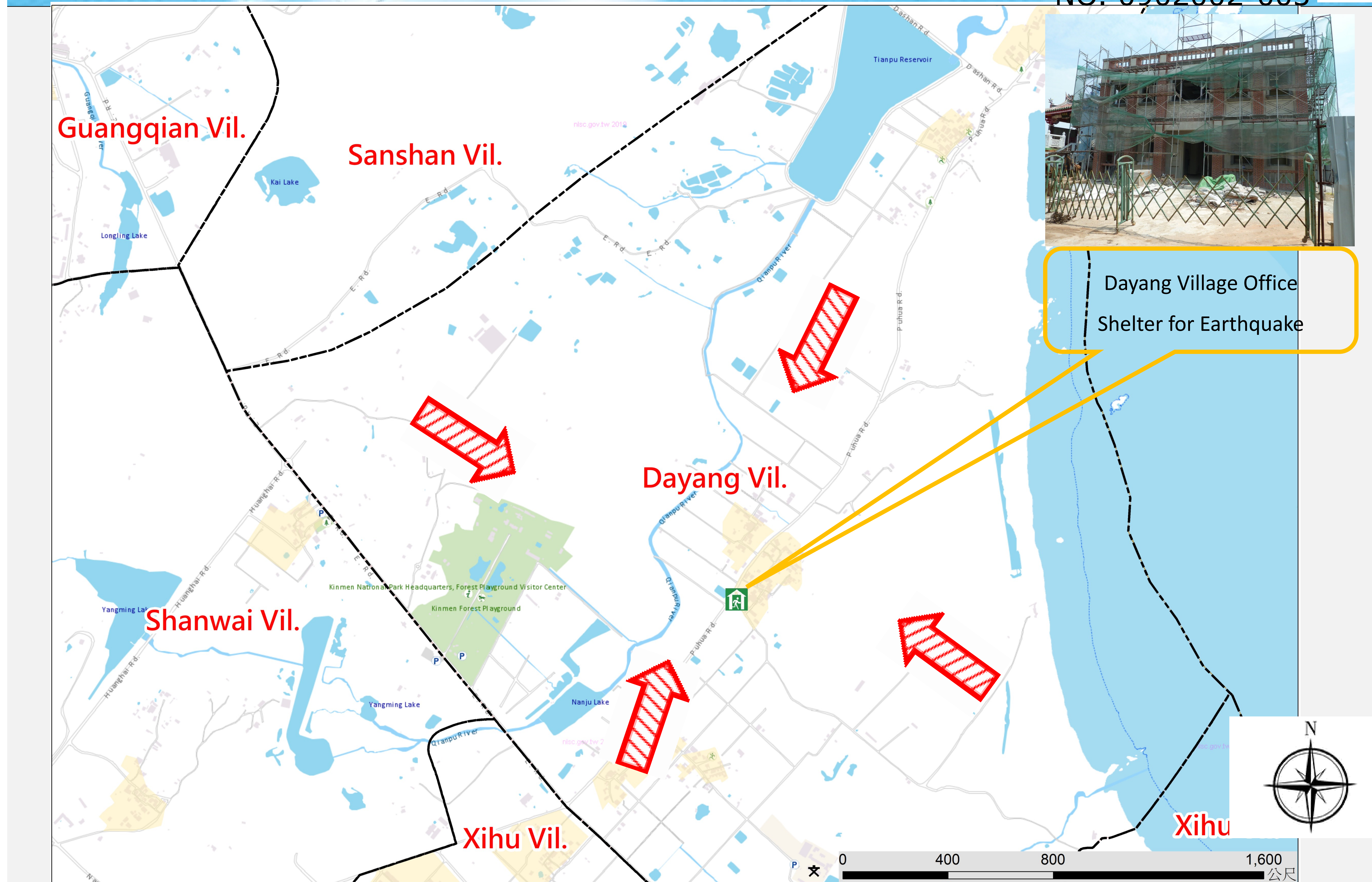
➔ Dayang Village Office

- No.22, Bishan, Jinsha
- Township,, Kinmen County
- 890,Taiwan (R.O.C.)

➔ Jinsha Township Adminstration

- No.112,Sec.1, Huandao E.Rd.,
- JinshaTownship , Kinmen County
- 890,Taiwan (R.O.C.)
- TEL ☎ 0910-381150

Made by Fire Bureau ,
Kinmen county
on JUN., 2019



Legend

Administrative Zone		Signs	Facilities				Store
--- Township	Water River	Red arrow Evacuation direction	Helicopter landing field	Police station	Township office	Public health center	
--- Village		Emergency Shelter(Earthquake)	Vehicle and personnel Rendezvous point	Firefighting Unit	Village office	Welfare institution	
--- Township route		Emergency Shelter (Flood)		Landmark	School	Warning signs	
--- Rural road		Emergency Shelter (Tsunami)	Emergency relief supplies storage	Indoor shelter	Park	Gas station	
--- County route		Emergency Operation Center		Outdoor shelter	Post office	Chunghwa Telecom	

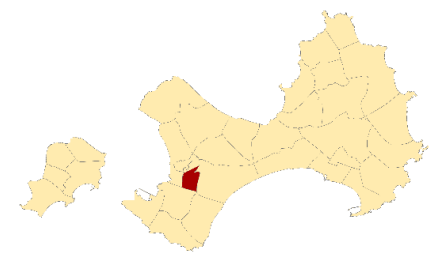
Kuanchien Village Emergency Evacuation Map(Jinsha Township, Kinmen County)

NO. 0902002-004



INFORMATION

Location



Population

2620

Emergency Telephone No.

- Emergency Operations Center
- TEL ☎ (082)-352150
- Jinsha Police Station
- TEL ☎ (082)-352260
- Jinsha Branch,
- Kinmen County Fire Bureau
- TEL ☎ (082)-352269
- Manager : Li-Zhi , Weng
- TEL ☎ 0911-700383.353833

Website for Emergency

- National Fire Agency
- <http://www.nfa.gov.tw>
- Kinmen County Fire Bureau
- <http://www.kfb.gov.tw/>
- Jinsha Township Administration
- <http://www.kinsha.gov.tw/>

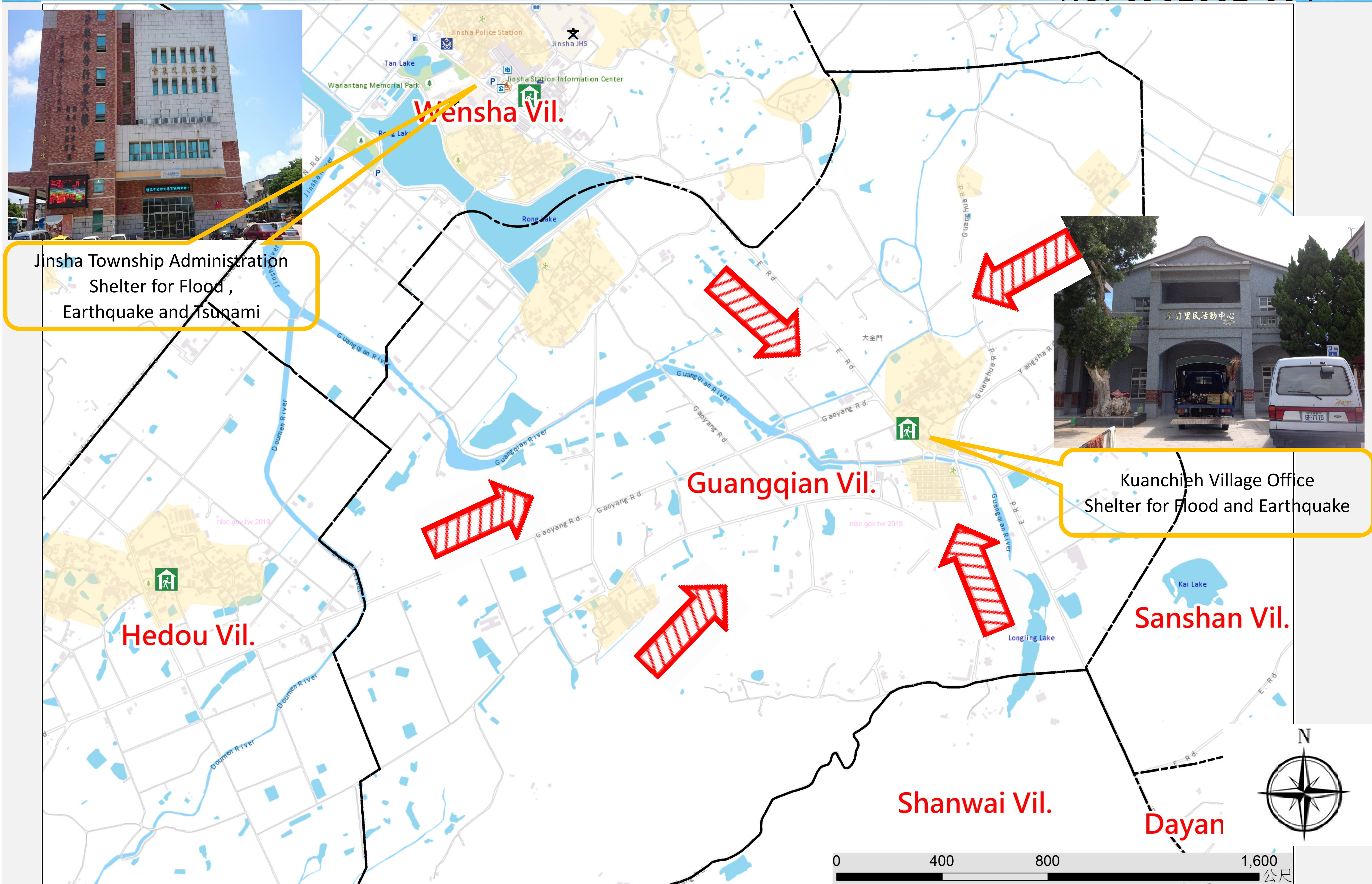
In Case of Disaster

- Earthquake🔍 Find open ground
- Flood or Tsunami🔍 Go higher ground or take vertical evacuation measures

Emergency Shelter

- ➔ Kuanchieh Village Office
- No.95-6, Yangsha Rd., Jinsha
- Township, Kinmen County
- 890,Taiwan (R.O.C.)
- TEL ☎ 0911-700383.352458
- ➔ Jinsha Township Administration
- No.112,Sec.1, Huandao E.Rd.,
- Jinsha Township , Kinmen County
- 890,Taiwan (R.O.C.)
- TEL ☎ 0910-381150

Made by Fire Bureau ,
Kinmen county
on JUN., 2019



Legend

Administrative Zone		Signs	Facilities			
--- Township	🌊 River	➔ Evacuation direction	🚁 Helicopter landing field	👮 Police station	🏢 Township office	🏠 Public health center
--- Village		🚒 Emergency Shelter(Earthquake)	🚚 Vehicle and personnel Rendezvous point	👦 Firefighting Unit	🏠 Village office	♿ Welfare institution
— Township route		💧 Emergency Shelter (Flood)		🌸 Landmark	🎓 School	⚠ Warning signs
— Rural road		🌊 Emergency Shelter (Tsunami)	🏠 Emergency relief supplies storage	🏠 Indoor shelter	🌳 Park	🛢 Gas station
— County route		🚑 Emergency Operation Center		🚶 Outdoor shelter	📮 Post office	📶 Chunghwa Telecom

Store

Hodo Village Emergency Evacuation Map(Jinsha Township,Kinmen County)

NO. 0902002-005



INFORMATION

Location

Population

2230

Emergency Telephone No.

- Emergency Operations Center
- TEL ☎ (082)-352150
- Jinsha Police Station
- TEL ☎ (082)-352260
- Jinsha Branch,
- Kinmen County Fire Bureau
- TEL ☎ (082)-352269
- Manager : FU-LIN , Chen
- TEL ☎ 0935-179994.352582

Website for Emergency

- National Fire Agency
- <http://www.nfa.gov.tw>
- Kinmen County Fire Bureau
- <http://www.kfb.gov.tw/>
- Jinsha Township Adminstratio
- <http://www.kinsha.gov.tw/>

In Case of Disaster

- Earthquake🔍Find open ground
- Flood or Tsunami🔍Go higher ground or take vertical evacuation measures

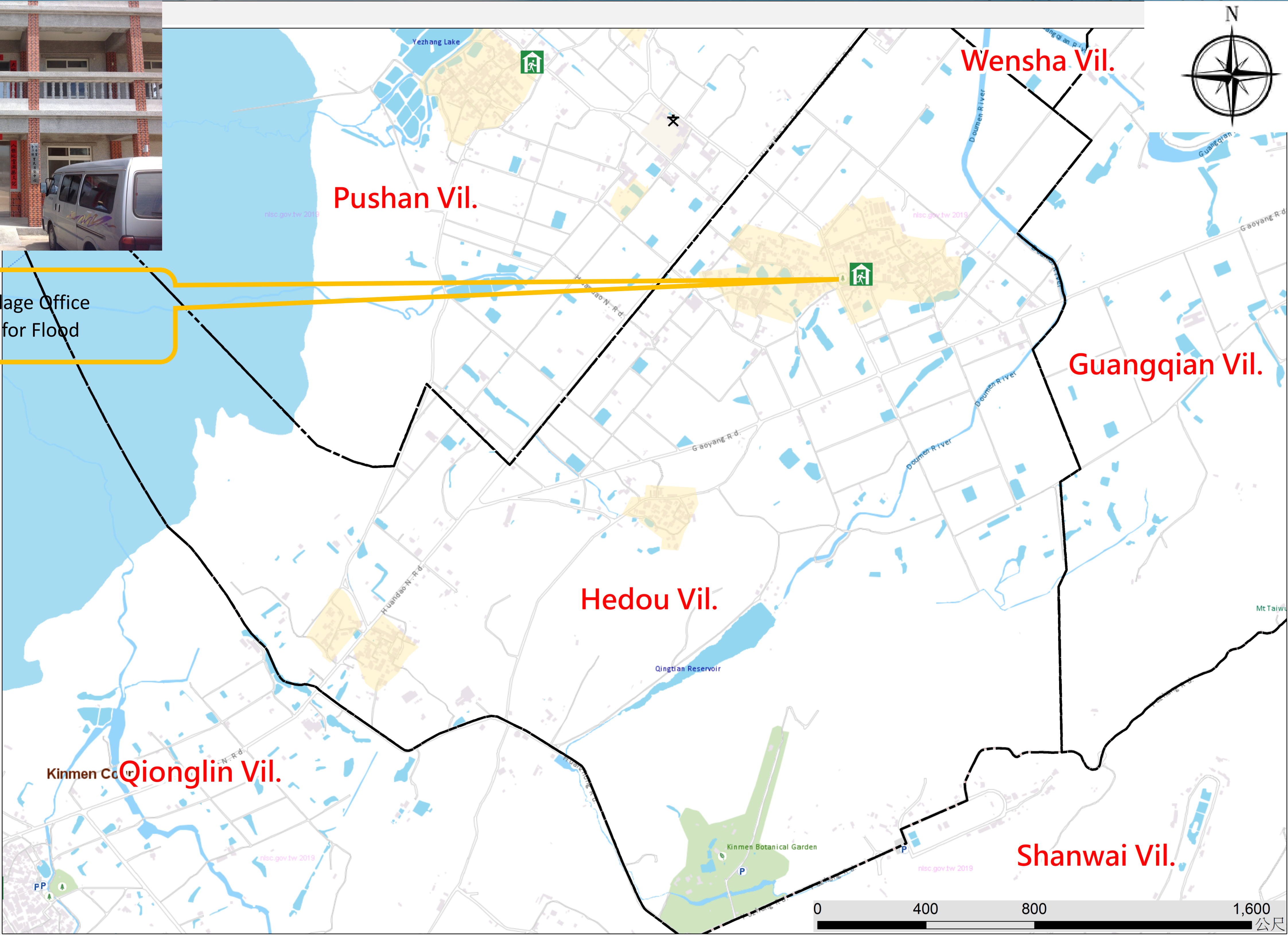
Emergency Shelter

- ➡ Hodo Village Office
- No.55-3, Doumen, Jinsha
- Township, Kinmen County
- 890,Taiwan (R.O.C.)
- TEL ☎ 0933-699799.352582
- ➡ Jinsha Township Adminstration
- No.112,Sec.1, Huandao E.Rd.,
- JinshaTownship , Kinmen County
- 890,Taiwan (R.O.C.)
- TEL ☎ 0910-381150

Made by Fire Bureau ,
Kinmen county
on JUN., 2019



Hodo Village Office
Shelter for Flood



Legend

Administrative Zone		Signs	Facilities				Store
— · — Township	🌊 River	➡ Evacuation direction	🚁 Helicopter landing field	👮 Police station	🏢 Township office	🏠 Public health center	
— · · — Village		🚒 Emergency Shelter(Earthquake)	🚚 Vehicle and personnel Rendezvous point	👮 Firefighting Unit	🏠 Village office	♿ Welfare institution	
— Township route		🌊 Emergency Shelter (Flood)		🌸 Landmark	🎓 School	⚠ Warning signs	
— Rural road		🌊 Emergency Shelter (Tsunami)	🏠 Emergency relief supplies storage	🏠 Indoor shelter	🌳 Park	🛢 Gas station	
— County route		🚚 Emergency Operation Center		🚶 Outdoor shelter	📮 Post office	📶 Chunghwa Telecom	

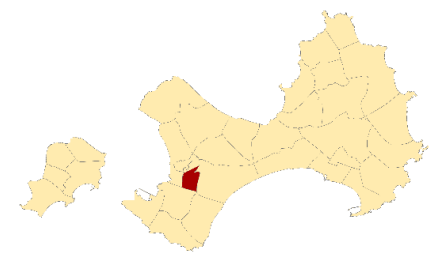
Xiyuan Village Emergency Evacuation Map(Jinsha Township,Kinmen County)

NO. 0902002-006



INFORMATION

Location



Population

1710

Emergency Telephone No.

- Emergency Operations Center
- TEL ☎ (082)-352150
- Jinsha Police Station
- TEL ☎ (082)-352260
- Jinsha Branch,
- Kinmen County Fire Bureau
- TEL ☎ (082)-352269
- Manager : Mu-Lin , Huang
- TEL ☎ 0910-327675.352253

Website for Emergency

National Fire Agency

- <http://www.nfa.gov.tw>
- Kinmen County Fire Bureau
- <http://www.kfb.gov.tw/>
- Jinsha Township Adminstratio
- <http://www.kinsha.gov.tw/>

In Case of Disaster

- Earthquake Find open ground
- Flood or Tsunami Go higher ground or take vertical evacuation measures

Emergency Shelter

➔ Siyuan Village Office

- No.1-3, Xiyuan, Jinsha

● Township, Kinmen County

● 890,Taiwan (R.O.C.)



- TEL ☎ 0910-327675.352253

➔ Jinsha Township Adminstration

- No.112,Sec.1, Huandao E.Rd.,

● JinshaTownship , Kinmen County

● 890,Taiwan (R.O.C.)

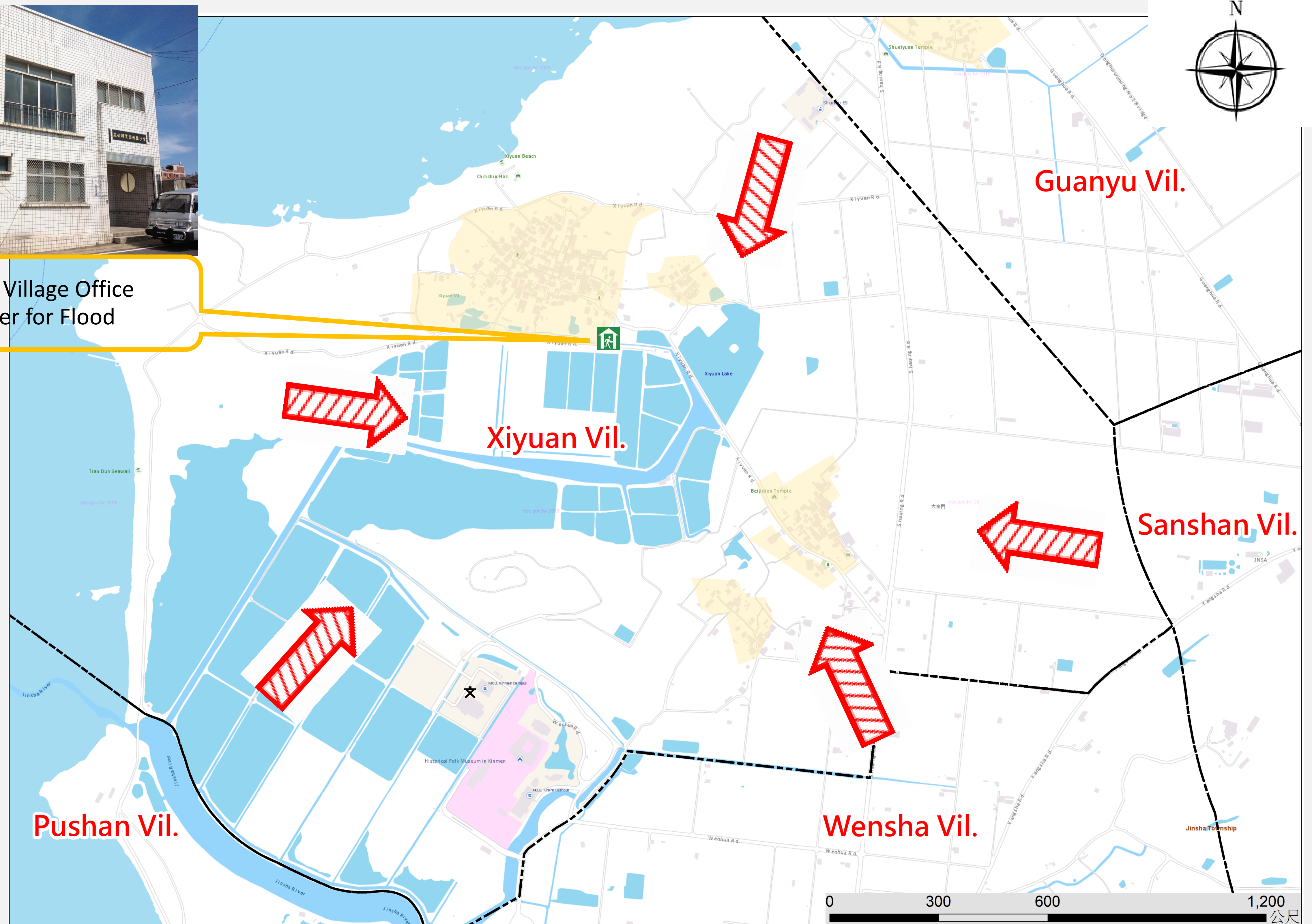
- TEL ☎ 0910-381150



Made by Fire Bureau ,
Kinmen county
on JUN., 2019



Xiyuan Village Office
Shelter for Flood



Legend

Administrative Zone		Signs	Facilities			
— · — Township	Water icon River	Red arrow Evacuation direction	Helicopter landing field	Police station	Township office	Public health center
— · — Village		Emergency Shelter(Earthquake)	Vehicle and personnel Rendezvous point	Firefighting Unit	Village office	Welfare institution
— Township route		Emergency Shelter (Flood)		Landmark	School	Warning signs
— Rural road		Emergency Shelter (Tsunami)	Emergency relief supplies storage	Indoor shelter	Park	Gas station
— County route		Emergency Operation Center		Outdoor shelter	Post office	Chunghwa Telecom

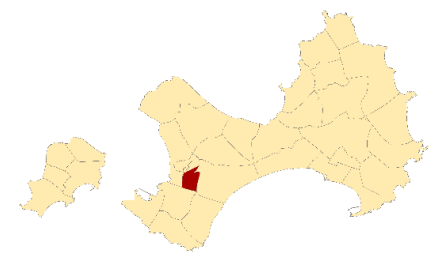
Guanyu Village Emergency Evacuation Map(Jinsha Township,Kinmen County)

NO. 0902002-007



INFORMATION

Location



Population

2450

Emergency Telephone No.

- Emergency Operations Center
- TEL ☎ (082)-352150
- Jinsha Police Station
- TEL ☎ (082)-352260
- Jinsha Branch,
- Kinmen County Fire Bureau
- TEL ☎ (082)-352269
- Manager : Gong – Qin , Yang
- TEL ☎ 0910-034919.355430

Website for Emergency

National Fire Agency

- <http://www.nfa.gov.tw>
- Kinmen County Fire Bureau
- <http://www.kfb.gov.tw/>
- Jinsha Township Adminstratio
- <http://www.kinsha.gov.tw/>

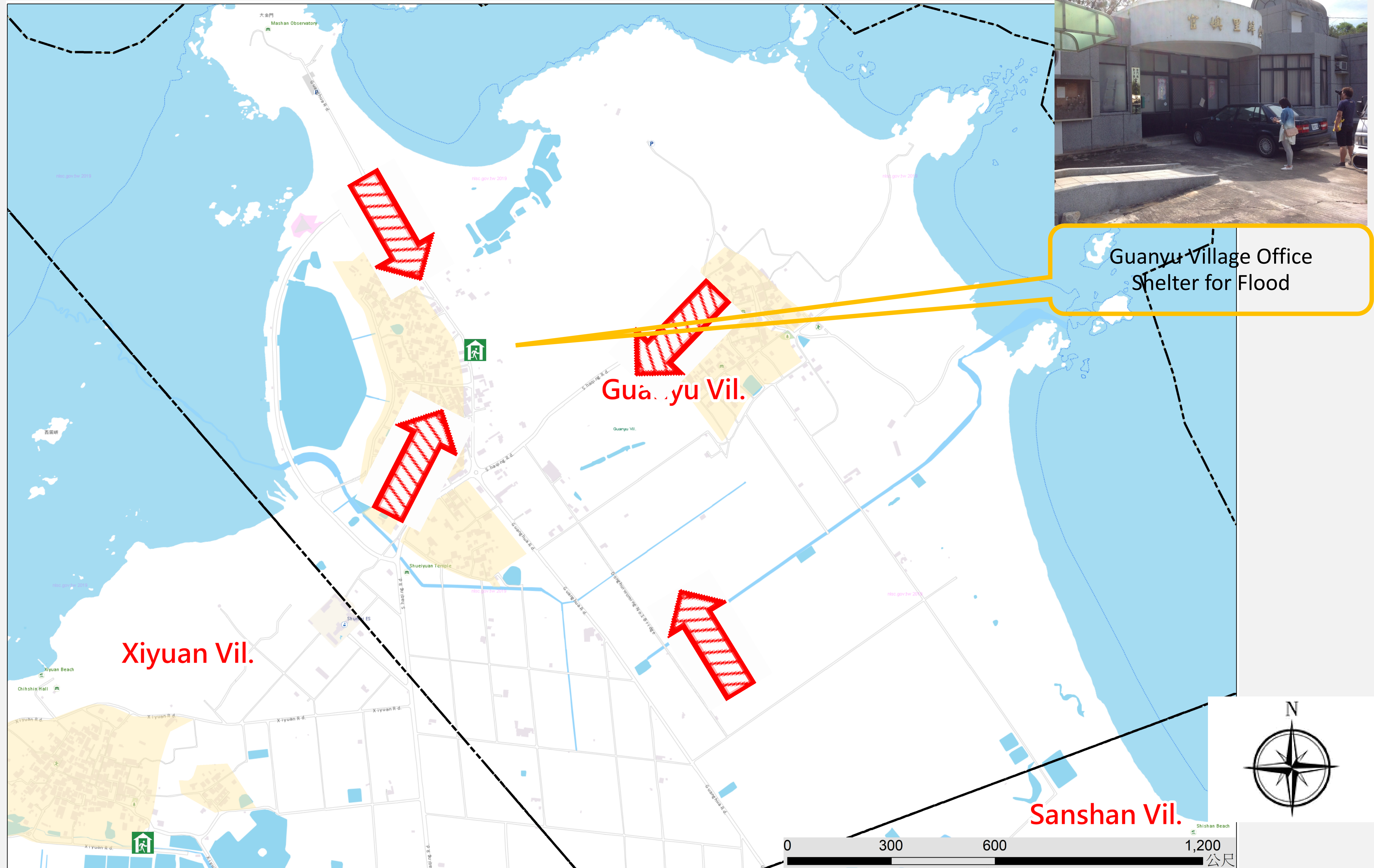
In Case of Disaster

- Earthquake Find open ground
- Flood or Tsunami Go higher ground or take vertical evacuation measures

Emergency Shelter

- ➔ Guanyu Village Office
- No.82-2, Guanyu., Jinsha
- Township , Kinmen County
- 890,Taiwan (R.O.C.)
- TEL ☎ 0910-034919.352457
- ➔ Jinsha Township Adminstration
- No.112,Sec.1, Huandao E.Rd.,
- JinshaTownship , Kinmen County
- 890,Taiwan (R.O.C.)
- TEL ☎ 0910-381150

Made by Fire Bureau ,
Kinmen county
on JUN., 2019



Legend

Administrative Zone		Signs	Facilities			
— • — Township	Water River	➔ Evacuation direction	Helicopter landing field	Police station	Township office	Public health center
— • — Village		Emergency Shelter(Earthquake)	Vehicle and personnel Rendezvous point	Firefighting Unit	Village office	Welfare institution
— Township route		Emergency Shelter (Flood)		Landmark	School	Warning signs
— Rural road		Emergency Shelter (Tsunami)	Emergency relief supplies storage	Indoor shelter	Park	Gas station
— County route		Emergency Operation Center		Outdoor shelter	Post office	Chunghwa Telecom

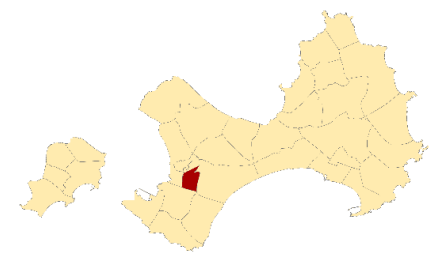
Pushan Village Emergency Evacuation Map(Jinsha Township,Kinmen County)

NO. 0902002-008



INFORMATION

Location



Population

2657

Emergency Telephone No.

- Emergency Operations Center
- TEL ☎ (082)-352150
- Jinsha Police Station
- TEL ☎ (082)-352260
- Jinsha Branch,
- Kinmen County Fire Bureau
- TEL ☎ (082)-352269
- Manager : Jia-Cai , Chou
- TEL ☎ 0932-817759.362848

Website for Emergency

National Fire Agency

- <http://www.nfa.gov.tw>
- Kinmen County Fire Bureau
- <http://www.kfb.gov.tw/>
- Jinsha Township Administration
- <http://www.kinsha.gov.tw/>

In Case of Disaster

- Earthquake Find open ground
- Flood or Tsunami Go higher ground or take vertical evacuation measures

Emergency Shelter

- ➔ Pushan Village Office
- No.4-3, Pubian, Jinsha
- Township, Kinmen County
- 890,Taiwan (R.O.C.)
- TEL ☎ 0932-817759.352859
- ➔ Jinsha Township Administration
- No.112,Sec.1, Huandao E.Rd.,
- Jinsha Township , Kinmen County
- 890,Taiwan (R.O.C.)
- TEL ☎ 0910-381150

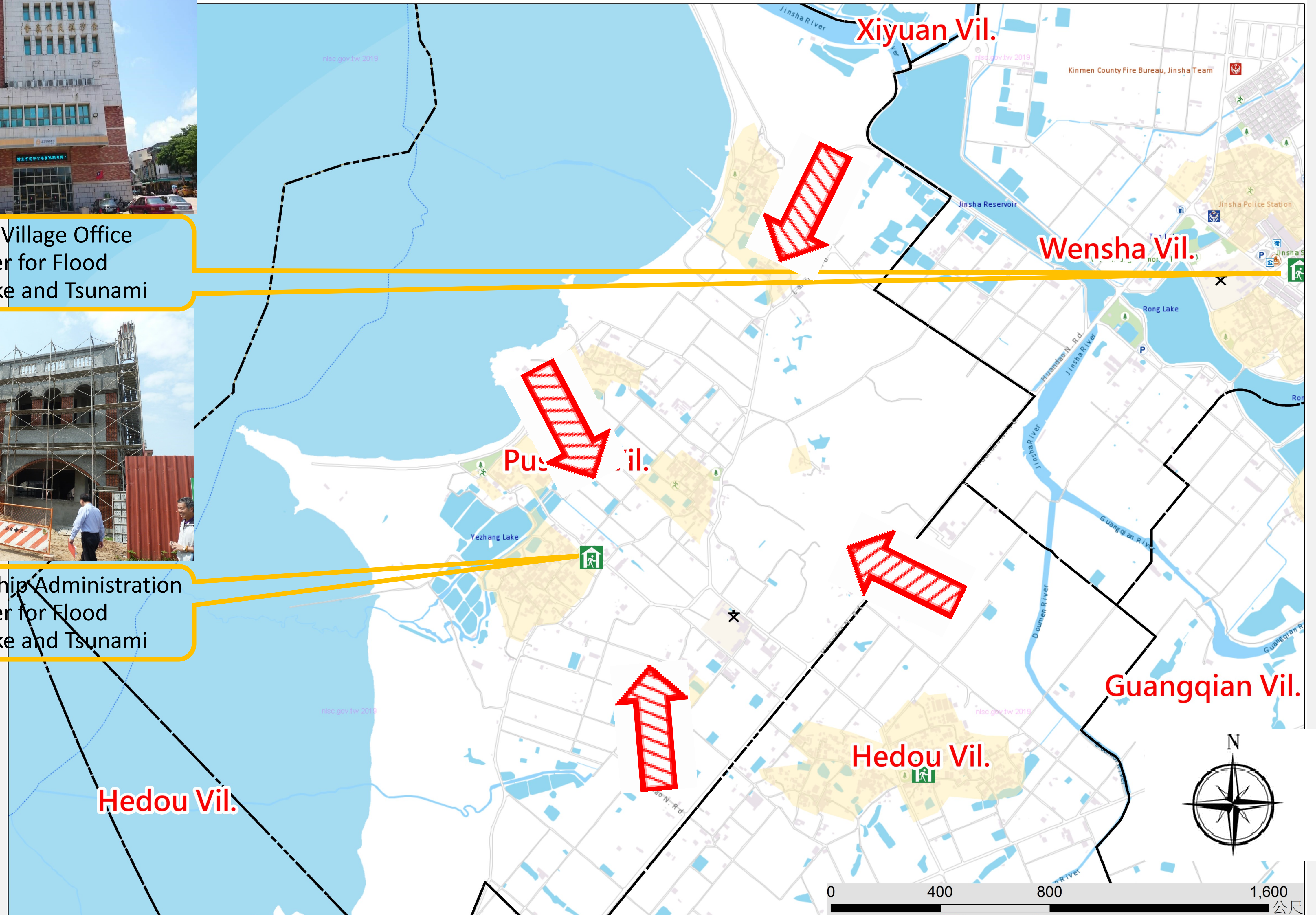
Made by Fire Bureau ,
Kinmen county
on JUN., 2019



Pushan Village Office
Shelter for Flood
Earthquake and Tsunami



Jinsha Township Administration
Shelter for Flood
Earthquake and Tsunami



Legend

Administrative Zone	Signs	Facilities
--- Township	Evacuation direction	Helicopter landing field
--- Village	Emergency Shelter(Earthquake)	Vehicle and personnel Rendezvous point
--- Township route	Emergency Shelter (Flood)	Emergency relief supplies storage
--- Rural road	Emergency Shelter (Tsunami)	
--- County route	Emergency Operation Center	
		Police station
		Firefighting Unit
		Landmark
		Indoor shelter
		Outdoor shelter
		Township office
		Village office
		School
		Park
		Post office
		Public health center
		Welfare institution
		Warning signs
		Gas station
		Chunghwa Telecom