

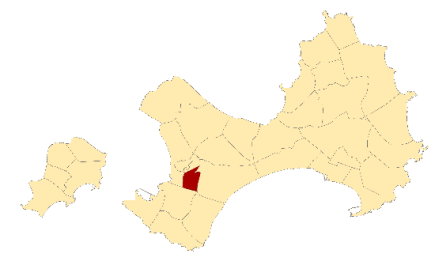
Wensha Village Emergency Evacuation Map(Jinsha Township, Kinmen County)

NO. 0902002-001



INFORMATION

Location



Population

5623

Emergency Telephone No.

- Emergency Operations Center
- TEL ☎ (082)-352150
- Jinsha Police Station
- TEL ☎ (082)-352260
- Jinsha Branch,
- Kinmen County Fire Bureau
- TEL ☎ (082)-352269
- Manager : Han-Long , Chang
- TEL ☎ 0932-987772.352556

Website for Emergency

- National Fire Agency ◆
- <http://www.nfa.gov.tw>
- Kinmen County Fire Bureau ◆
- <http://www.kfb.gov.tw/>
- Jinsha Township Administration ◆
- <http://www.kinsha.gov.tw/>

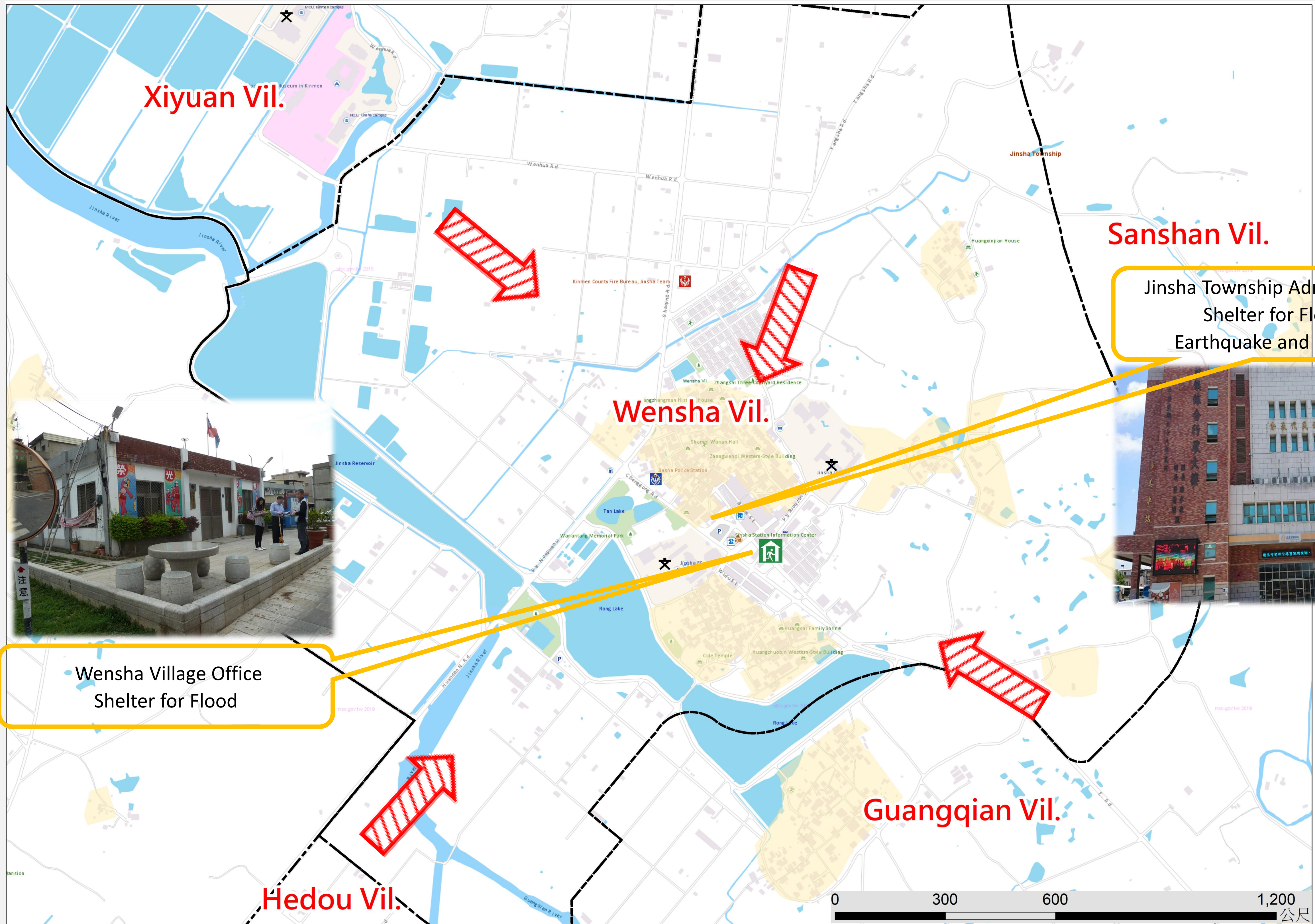
In Case of Disaster

- Earthquake 🔍 Find open ground
- Flood or Tsunami 🔍 Go higher ground or take vertical evacuation measures

Emergency Shelter

- ➔ Wensha Village Office
- No.1-1, Guozhong Rd., Jinsha
- Township , Kinmen County
- 890,Taiwan (R.O.C.) 🌊
- TEL ☎ 0932-897772.352604
- ➔ Jinsha Township Administration
- No.112,Sec.1, Huandao E.Rd.,
- JinshaTownship , Kinmen County
- 890,Taiwan (R.O.C.) 🌊🌪️🌊
- TEL ☎ 0910-381150 🌊🌪️🌊

Made by Fire Bureau ,
Kinmen county
on JUN., 2024



Wensha Village Office
Shelter for Flood

Jinsha Township Administration
Shelter for Flood ,
Earthquake and Tsunami

Legend						
Administrative Zone	Signs	Facilities				
--- Township	🌊 River	➔ Evacuation direction	🚁 Helicopter landing field	👮 Police station	🏢 Township office	🏥 Public health center
--- Village		🚒 Emergency Shelter(Earthquake)	🚗 Vehicle and personnel Rendezvous point	👨‍🚒 Firefighting Unit	🏠 Village office	♿ Welfare institution
— Township route		🌊 Emergency Shelter (Flood)		🌸 Landmark	🎓 School	⚠ Warning signs
— Rural road		🌊 Emergency Shelter (Tsunami)	🏠 Emergency relief supplies storage	🏠 Indoor shelter	🌳 Park	⛽ Gas station
— County route		🚚 Emergency Operation Center		🚶 Outdoor shelter	📮 Post office	📶 Chunghua Telecom

Store

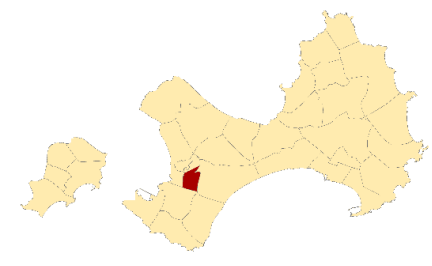
Sanshan Village Emergency Evacuation Map (Jinsha Township, Kinmen County)

NO. 0902002-002



INFORMATION

Location



Population

2090

Emergency Telephone No.

- Emergency Operations Center
- TEL ☎ (082)-352150
- Jinsha Police Station
- TEL ☎ (082)-352260
- Jinsha Branch,
- Kinmen County Fire Bureau
- TEL ☎ (082)-352269
- Manager : Cih-Fa , Chen
- TEL ☎ 0912-616368.353250

Website for Emergency

- National Fire Agency ◆
- <http://www.nfa.gov.tw>
- Kinmen County Fire Bureau ◆
- <http://www.kfb.gov.tw/>
- Jinsha Township Administration ◆
- <http://www.kinsha.gov.tw/>

In Case of Disaster

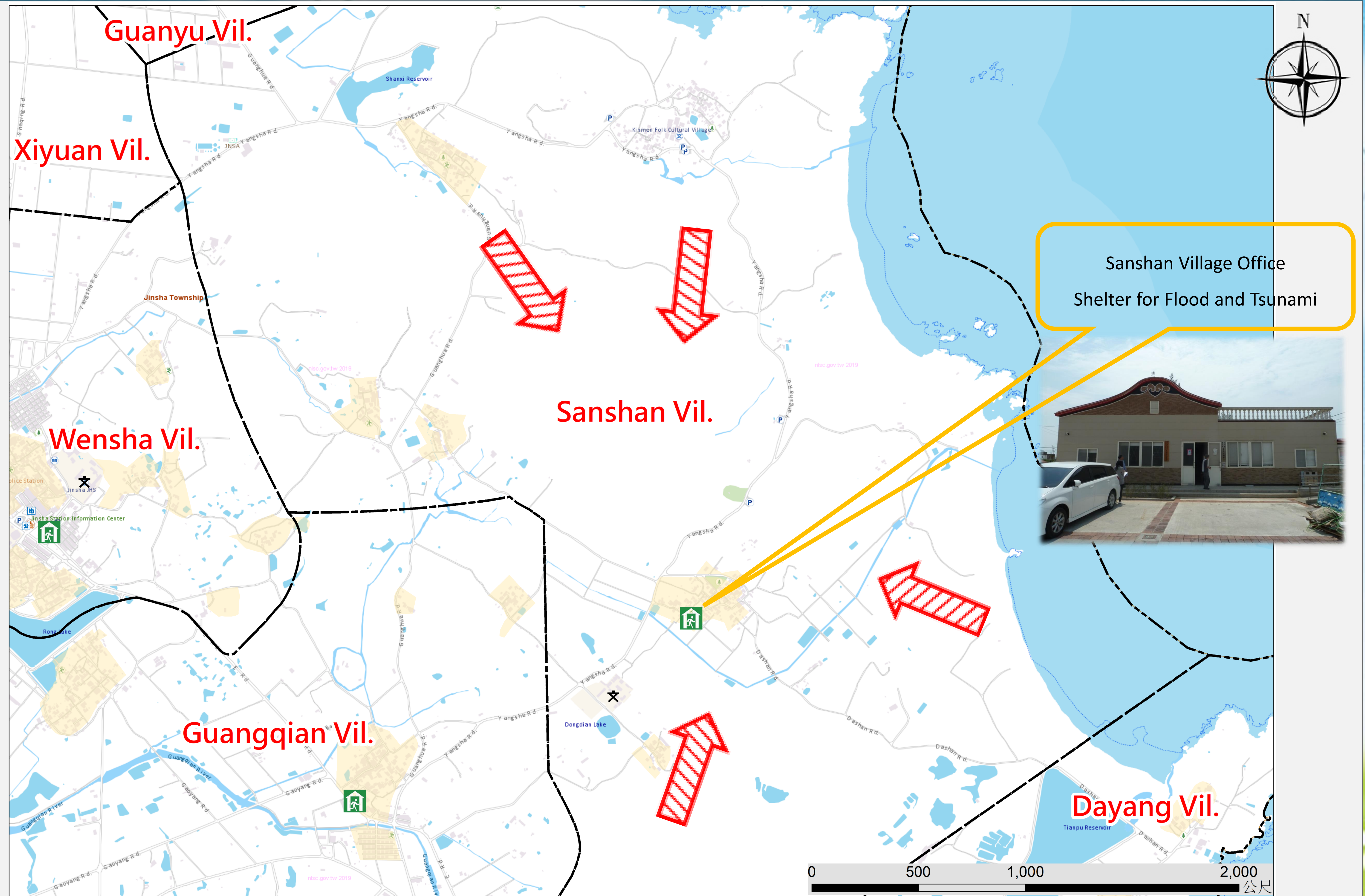
- Earthquake 🔍 Find open ground
- Flood or Tsunami 🔍 Go higher ground or take vertical evacuation measures

Emergency Shelter

- ➔ Senshen Village Office
- No.58-1, Bishan, Jinsha
- Township , Kinmen County
- 890,Taiwan (R.O.C.)
- TEL ☎ 0912-616368.352858
- ➔ Jinsha Township Administration
- No.112,Sec.1, Huandao E.Rd.,
- Jinsha Township , Kinmen County
- 890,Taiwan (R.O.C.)
- TEL ☎ 0910-381150

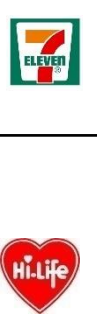


Made by Fire Bureau ,
Kinmen county
on JUN., 2024



Legend						
Administrative Zone	Signs	Facilities				
--- Township	🌊 River	➔ Evacuation direction	🚁 Helicopter landing field	👮 Police station	🏢 Township office	🏠 Public health center
--- Village		🏠 Emergency Shelter(Earthquake)	🚚 Vehicle and personnel Rendezvous point	👨‍🚒 Firefighting Unit	🏠 Village office	♿ Welfare institution
— Township route		💧 Emergency Shelter (Flood)	🏠 Emergency relief supplies storage	🌸 Landmark	🎓 School	⚠ Warning signs
— Rural road		🌊 Emergency Shelter (Tsunami)		🏠 Indoor shelter	🌳 Park	🛢 Gas station
— County route		🚚 Emergency Operation Center		🚶 Outdoor shelter	📮 Post office	📶 Chunghua Telecom

Store



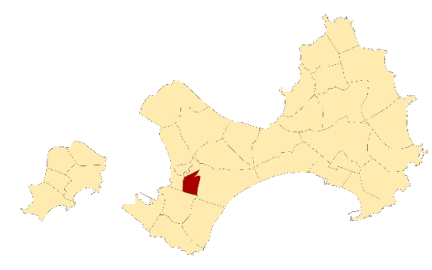
Dayang Village Emergency Evacuation Map (Jinsha Township, Kinmen County)

NO. 0902002-003



INFORMATION

Location



Population

1326

Emergency Telephone No.

- Emergency Operations Center
- TEL ☎ (082)-352150
- Jinsha Police Station
- TEL ☎ (082)-352260
- Jinsha Branch,
- Kinmen County Fire Bureau
- TEL ☎ (082)-352269
- Manager : You-Tai , Wu
- TEL ☎ 0921-588874.335089

Website for Emergency

- National Fire Agency ◆
- <http://www.nfa.gov.tw>
- Kinmen County Fire Bureau ◆
- <http://www.kfb.gov.tw/>
- Jinsha Township Administration ◆
- <http://www.kinsha.gov.tw/>

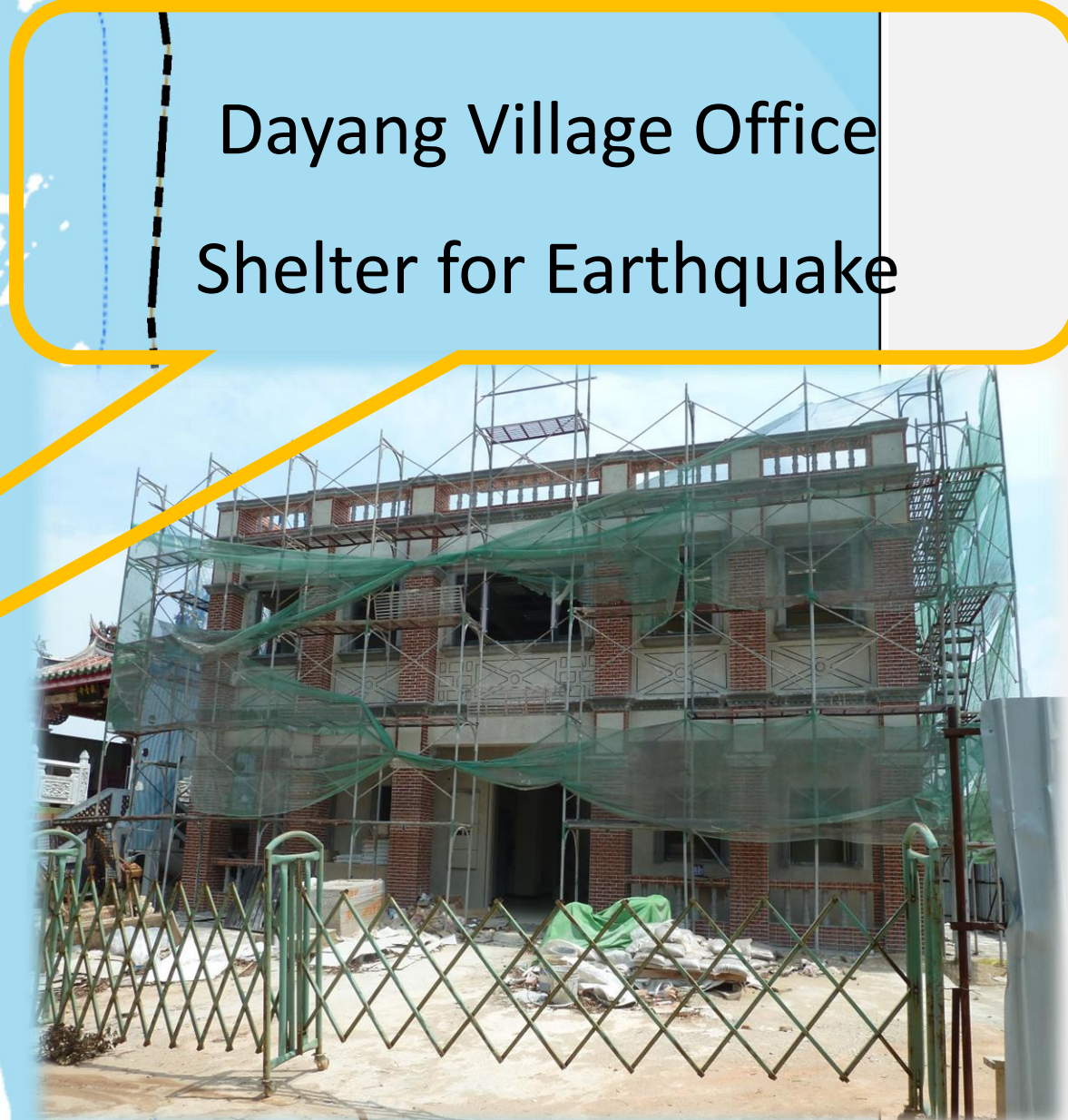
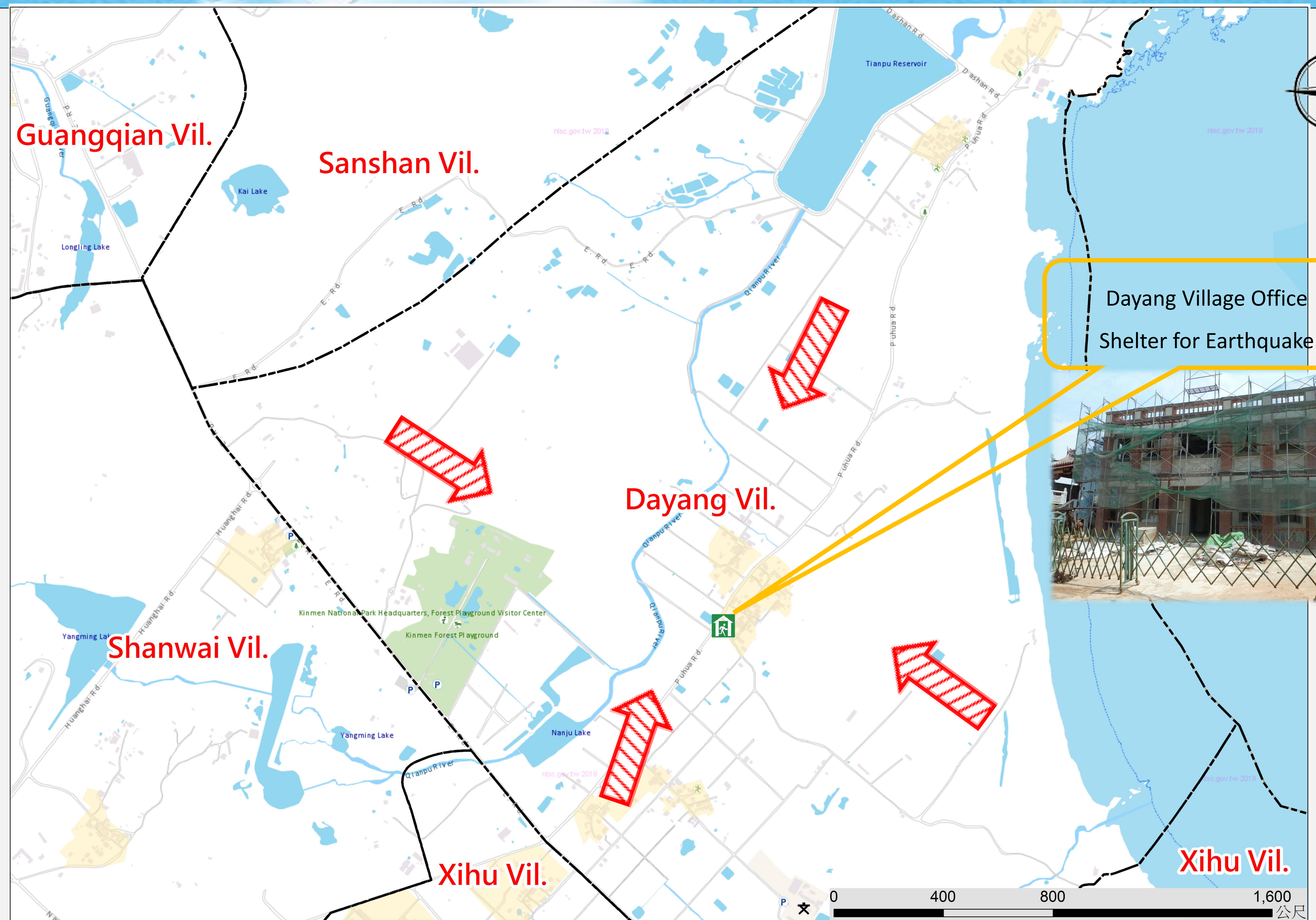
In Case of Disaster

- Earthquake 🔍 Find open ground
- Flood or Tsunami 🔍 Go higher ground or take vertical evacuation measures

Emergency Shelter

- ➔ Dayang Village Office
- No.22, Bishan, Jinsha
- Township,, Kinmen County
- 890,Taiwan (R.O.C.)
- TEL ☎ 0921-588874.332174
- ➔ Jinsha Township Administration
- No.112,Sec.1, Huandao E.Rd.,
- JinshaTownship , Kinmen County
- 890,Taiwan (R.O.C.)
- TEL ☎ 0910-381150

Made by Fire Bureau ,
Kinmen county
on JUN., 2024



Legend

Administrative Zone	Signs	Facilities
<ul style="list-style-type: none"> --- Township --- Village — Township route — Rural road — County route 	<ul style="list-style-type: none"> 🌊 River ➔ Evacuation direction 🏠 Emergency Shelter(Earthquake) 💧 Emergency Shelter (Flood) 🌊 Emergency Shelter (Tsunami) 🚑 Emergency Operation Center 	<ul style="list-style-type: none"> 🚁 Helicopter landing field 🚒 Firefighting Unit 🌸 Landmark 🏠 Indoor shelter 🚶 Outdoor shelter 🚓 Police station 🚒 Firefighting Unit 🌸 Landmark 🏠 Indoor shelter 🚶 Outdoor shelter 🏢 Township office 🏠 Village office 🎓 School 🌳 Park 📮 Post office 🏠 Public health center ♿ Welfare institution ⚠ Warning signs 🛢 Gas station 📶 Chunghua Telecom

St
o
r
e

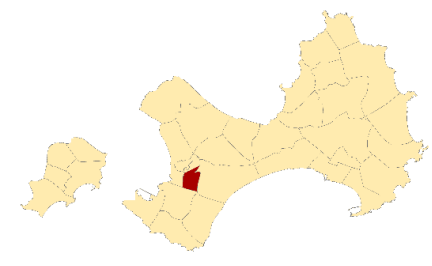
Kuanchien Village Emergency Evacuation Map(Jinsha Township, Kinmen County)

NO. 0902002-004



INFORMATION

Location



Population

2677

Emergency Telephone No.

- Emergency Operations Center
TEL (082)-352150
- Jinsha Police Station
TEL (082)-352260
- Jinsha Branch,
Kinmen County Fire Bureau
TEL (082)-352269
- Manager : Li-Zhi , Weng
TEL 0911-700383.353833

Website for Emergency

- National Fire Agency
<http://www.nfa.gov.tw>
- Kinmen County Fire Bureau
<http://www.kfb.gov.tw/>
- Jinsha Township Administration
<http://www.kinsha.gov.tw/>

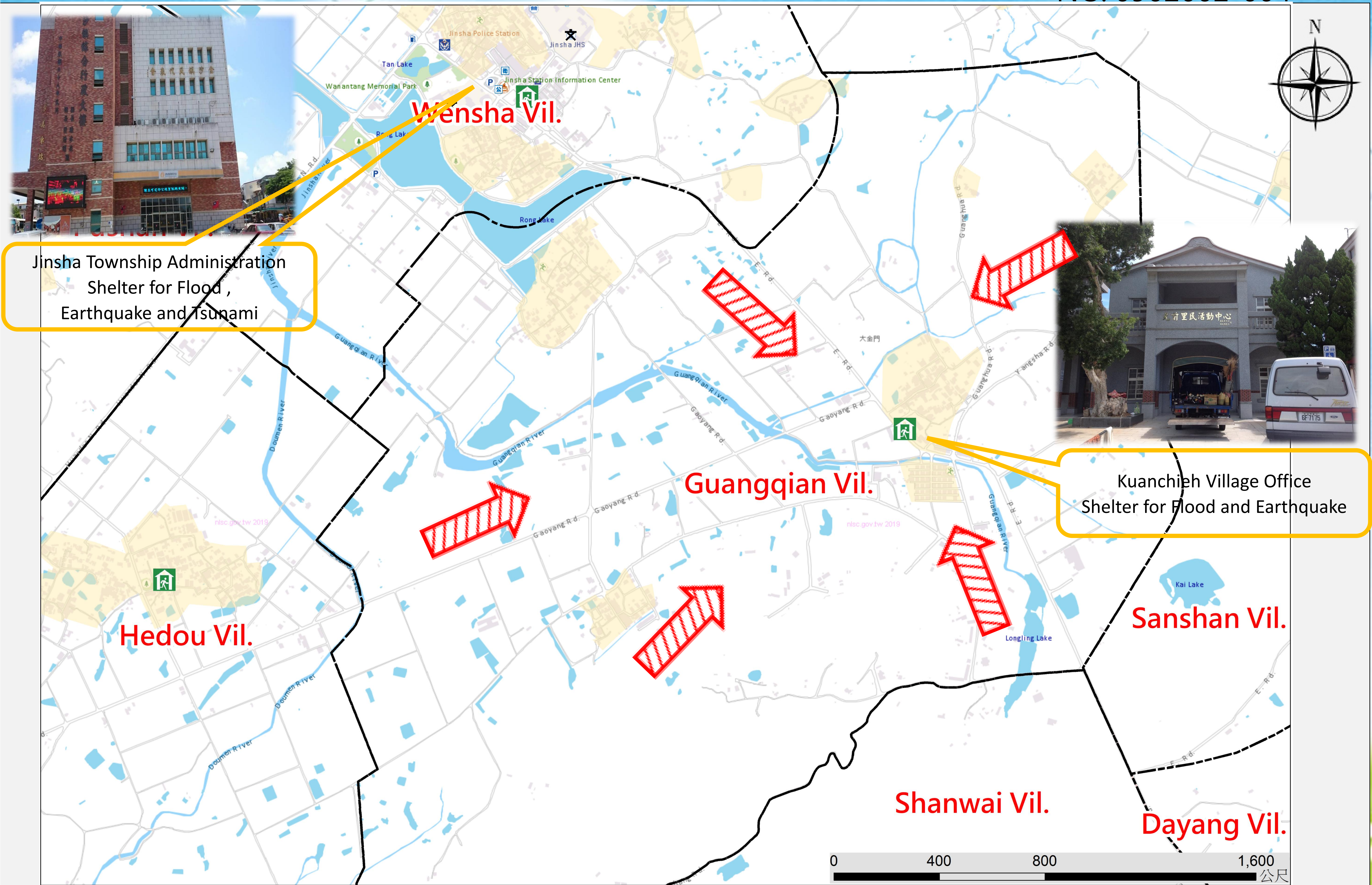
In Case of Disaster

- Earthquake Find open ground
- Flood or Tsunami Go higher ground or take vertical evacuation measures

Emergency Shelter

- ➔ Kuanchieh Village Office
● No.95-6, Yangsha Rd., Jinsha Township, Kinmen County
● 890,Taiwan (R.O.C.)
● TEL 0911-700383.352458
- ➔ Jinsha Township Administration
● No.112,Sec.1, Huandao E.Rd., Jinsha Township, Kinmen County
● 890,Taiwan (R.O.C.)
● TEL 0910-381150

Made by Fire Bureau ,
Kinmen county
on JUN., 2024



Legend						
Administrative Zone	Signs	Facilities				
--- Township	Water drop River	Red arrow Evacuation direction	Helicopter landing field	Police station	Township office	Public health center
--- Village		Red house with lightning bolt Emergency Shelter(Earthquake)	Green house with car and people Vehicle and personnel Rendezvous point	Fire truck Firefighting Unit	Red house with people Village office	Blue wheelchair Welfare institution
--- Township route		Blue water Emergency Shelter (Flood)	Blue house with supplies Emergency relief supplies storage	Red flower Landmark	Blue school icon School	Yellow triangle Warning signs
--- Rural road		Blue wave Emergency Shelter (Tsunami)		Green house Indoor shelter	Green tree Park	Blue gas pump Gas station
--- County route		Yellow circle with 'E' Emergency Operation Center		Green person Outdoor shelter	Green post office icon Post office	Blue globe Chunghua Telecom

St
o
r
e

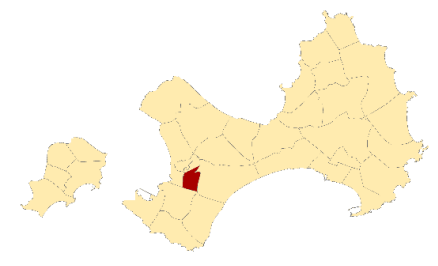
Hodo Village Emergency Evacuation Map(Jinsha Township, Kinmen County)

NO. 0902002-005



INFORMATION

Location



Population

2301

Emergency Telephone No.

- Emergency Operations Center
- TEL ☎ (082)-352150
- Jinsha Police Station
- TEL ☎ (082)-352260
- Jinsha Branch,
- Kinmen County Fire Bureau
- TEL ☎ (082)-352269
- Manager : FU-LIN , Chen
- TEL ☎ 0935-179994.352582

Website for Emergency

- National Fire Agency ◆
- <http://www.nfa.gov.tw>
- Kinmen County Fire Bureau ◆
- <http://www.kfb.gov.tw/>
- Jinsha Township Administration ◆
- <http://www.kinsha.gov.tw/>

In Case of Disaster

- Earthquake 🔍 Find open ground
- Flood or Tsunami 🔍 Go higher ground or take vertical evacuation measures

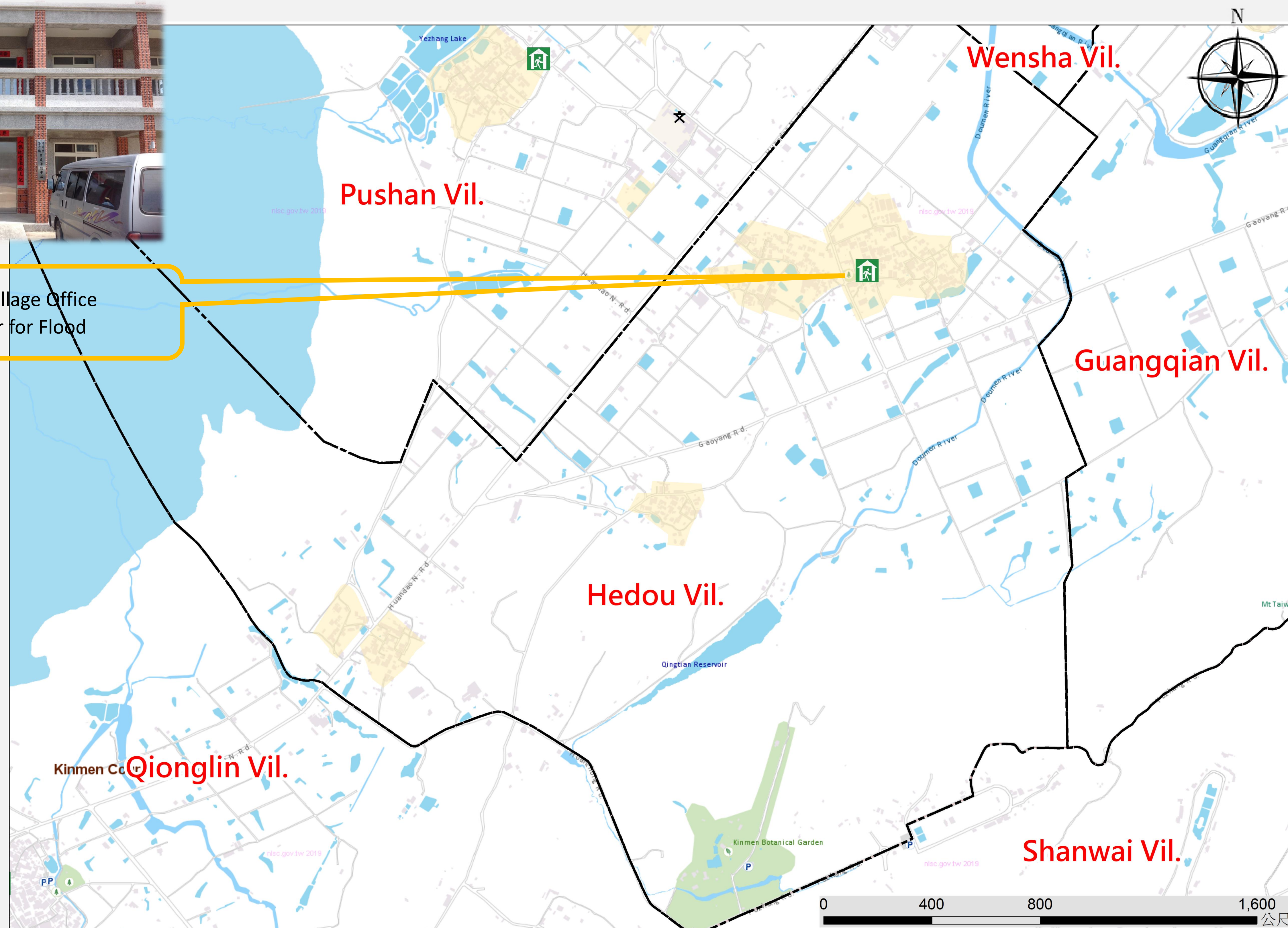
Emergency Shelter

- ➔ Hodo Village Office
- No.55-3, Doumen, Jinsha
- Township, Kinmen County
- 890,Taiwan (R.O.C.) 🌊
- TEL ☎ 0933-699799.352582
- ➔ Jinsha Township Administration
- No.112,Sec.1, Huandao E.Rd.,
- Jinsha Township , Kinmen County
- 890,Taiwan (R.O.C.)
- TEL ☎ 0910-381150 🌊🌪️🌊

Made by Fire Bureau ,
Kinmen county
on JUN., 2024



Hodo Village Office
Shelter for Flood



Legend

Administrative Zone	Signs	Facilities
<ul style="list-style-type: none"> --- Township --- Village — Township route — Rural road — County route 	<ul style="list-style-type: none"> 🌊 River 🚒 Evacuation direction 🏠 Emergency Shelter(Earthquake) 🌊 Emergency Shelter (Flood) 🌊 Emergency Shelter (Tsunami) 🚓 Emergency Operation Center 	<ul style="list-style-type: none"> 🚁 Helicopter landing field 🚒 Firefighting Unit 🌸 Landmark 🏠 Indoor shelter 🚶 Outdoor shelter 👮 Police station 🏠 Township office 📖 School 🌳 Park 📮 Post office 🏠 Public health center ♿ Welfare institution ⚠ Warning signs 🛢 Gas station 📶 Chunghua Telecom

St
o
r
e

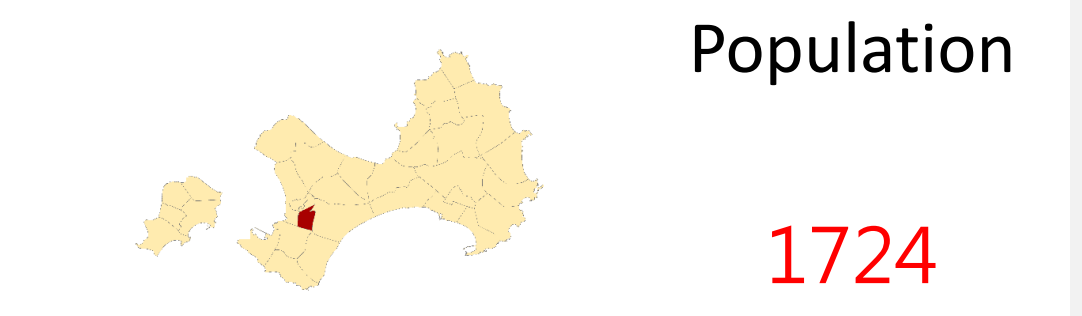
Xiyuan Village Emergency Evacuation Map(Jinsha Township, Kinmen County)

NO. 0902002-006



INFORMATION

Location



Emergency Telephone No.

- Emergency Operations Center
- TEL ☎ (082)-352150
- Jinsha Police Station
- TEL ☎ (082)-352260
- Jinsha Branch,
- Kinmen County Fire Bureau
- TEL ☎ (082)-352269
- Manager : Mu-Lin , Huang
- TEL ☎ 0910-327675.352253

Website for Emergency

- National Fire Agency ◆
- <http://www.nfa.gov.tw>
- Kinmen County Fire Bureau ◆
- <http://www.kfb.gov.tw/>
- Jinsha Township Adminstratio ◆
- <http://www.kinsha.gov.tw/>

In Case of Disaster

- Earthquake 🔍 Find open ground
- Flood or Tsunami 🔍 Go higher ground or take vertical evacuation measures

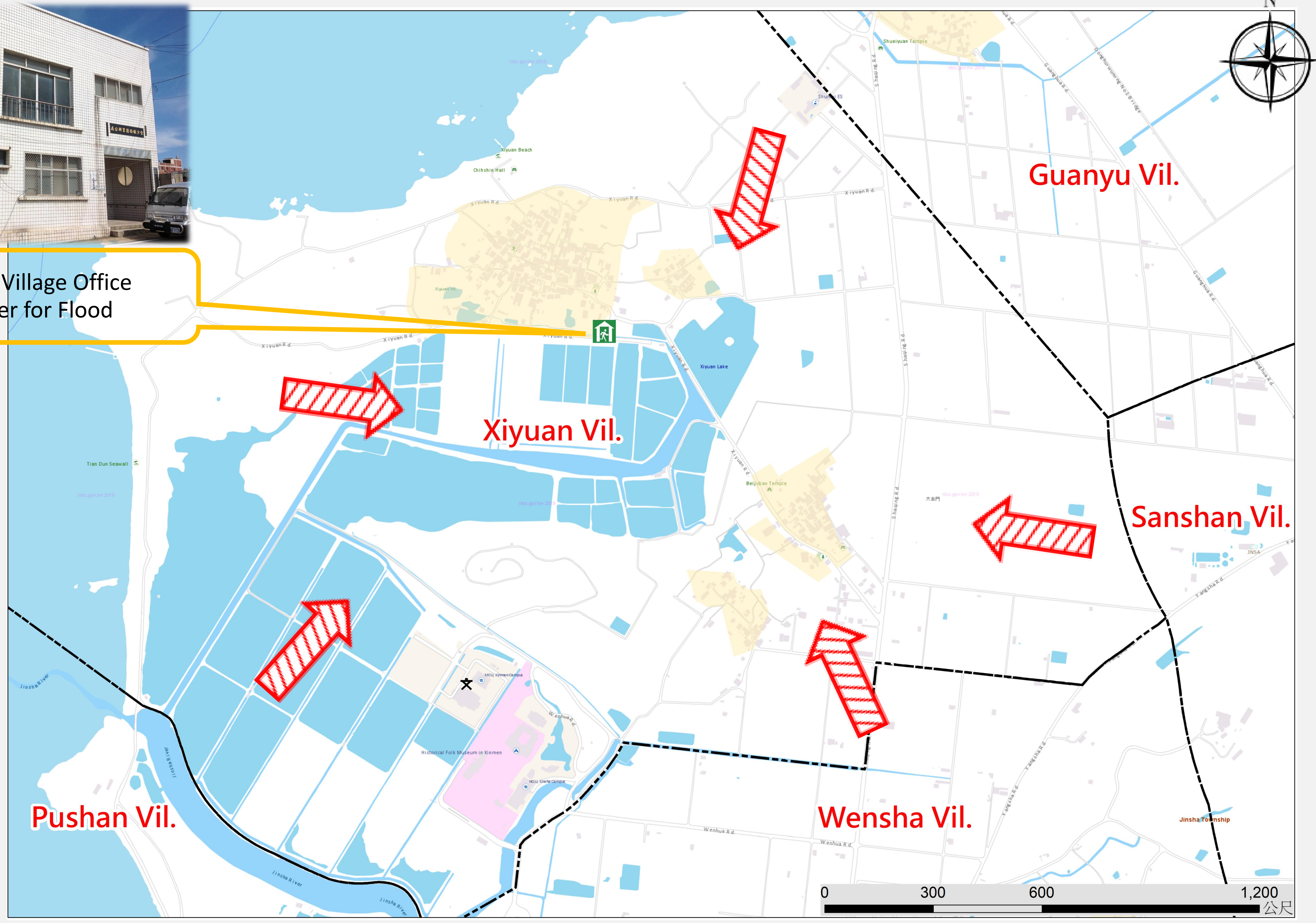
Emergency Shelter

- ➔ Siyuan Village Office
- No.1-3, Xiyuan, Jinsha
- Township, Kinmen County
- 890,Taiwan (R.O.C.) 🌊
- TEL ☎ 0910-327675.352253
- ➔ Jinsha Township Administration
- No.112,Sec.1, Huandao E.Rd.,
- JinshaTownship , Kinmen County
- 890,Taiwan (R.O.C.) 🌊🌪️🌊
- TEL ☎ 0910-381150 🌊🌪️🌊

Made by Fire Bureau , Kinmen county on JUN., 2024



Xiyuan Village Office Shelter for Flood



Legend						
Administrative Zone	Signs	Facilities				
--- Township	🌊 River	➔ Evacuation direction	🚁 Helicopter landing field	👮 Police station	🏢 Township office	🏠 Public health center
--- Village		🏠 Emergency Shelter(Earthquake)	🚚 Vehicle and personnel Rendezvous point	👨‍🚒 Firefighting Unit	🏠 Village office	♿ Welfare institution
— Township route		🌊 Emergency Shelter (Flood)		🌸 Landmark	🎓 School	⚠ Warning signs
— Rural road		🌊 Emergency Shelter (Tsunami)	🏠 Emergency relief supplies storage	🏠 Indoor shelter	🌳 Park	🛢 Gas station
— County route		🚚 Emergency Operation Center		🚶 Outdoor shelter	📮 Post office	📶 Chunghua Telecom

St
o
r
e

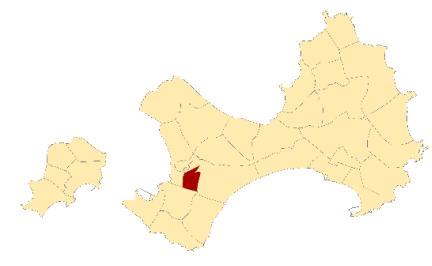
Guanyu Village Emergency Evacuation Map(Jinsha Township, Kinmen County)

NO. 0902002-007



INFORMATION

Location



Population

2391

Emergency Telephone No.

- Emergency Operations Center
- TEL ☎ (082)-352150
- Jinsha Police Station
- TEL ☎ (082)-352260
- Jinsha Branch,
- Kinmen County Fire Bureau
- TEL ☎ (082)-352269
- Manager : Gong – Qin , Yang
- TEL ☎ 0910-034919.355430

Website for Emergency

- National Fire Agency ◆
- <http://www.nfa.gov.tw>
- Kinmen County Fire Bureau ◆
- <http://www.kfb.gov.tw/>
- Jinsha Township Administration ◆
- <http://www.kinsha.gov.tw/>

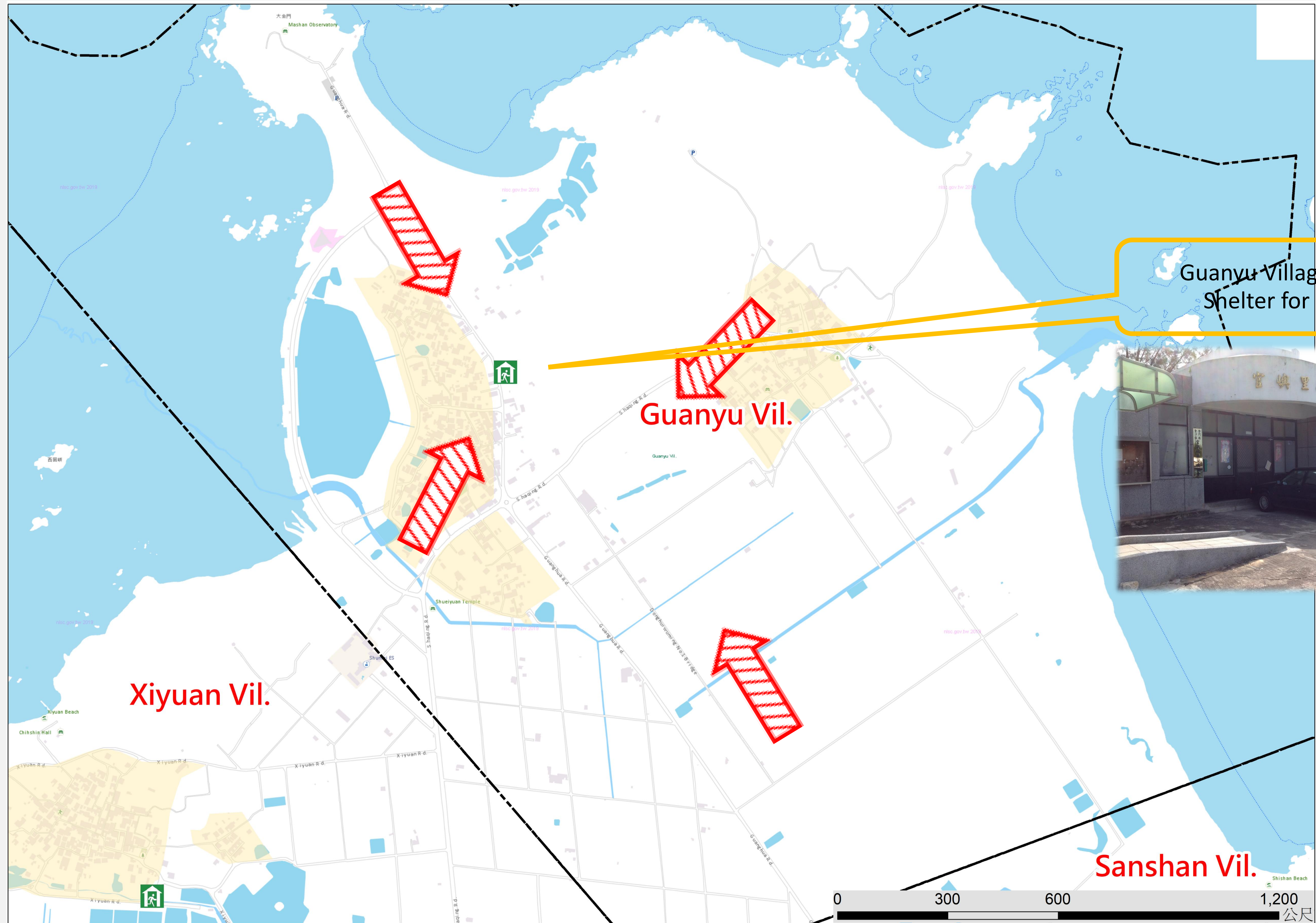
In Case of Disaster

- Earthquake 🔍 Find open ground
- Flood or Tsunami 🔍 Go higher ground or take vertical evacuation measures

Emergency Shelter

- ➔ Guanyu Village Office
- No.82-2, Guanyu., Jinsha
- Township , Kinmen County
- 890,Taiwan (R.O.C.)
- TEL ☎ 0910-034919.352457
- ➔ Jinsha Township Administration
- No.112,Sec.1, Huandao E.Rd.,
- Jinsha Township , Kinmen County
- 890,Taiwan (R.O.C.)
- TEL ☎ 0910-381150

Made by Fire Bureau ,
Kinmen county
on JUN., 2024



Legend

Administrative Zone	Signs	Facilities
<ul style="list-style-type: none"> --- Township --- Village — Township route — Rural road — County route 	<ul style="list-style-type: none"> 🌊 River ➔ Evacuation direction 🏠 Emergency Shelter(Earthquake) 💧 Emergency Shelter (Flood) 🌊 Emergency Shelter (Tsunami) 🚑 Emergency Operation Center 	<ul style="list-style-type: none"> 🚁 Helicopter landing field 🚒 Firefighting Unit 🌸 Landmark 🏠 Indoor shelter 🏠 Emergency relief supplies storage 🚓 Police station 🚒 Firefighting Unit 🌸 Landmark 🏠 Indoor shelter 🚶 Outdoor shelter 🏢 Township office 🏠 Village office 🎓 School 🌳 Park 📮 Post office 🏠 Public health center ♿ Welfare institution ⚠ Warning signs 🛢 Gas station 📶 Chunghua Telecom

Store

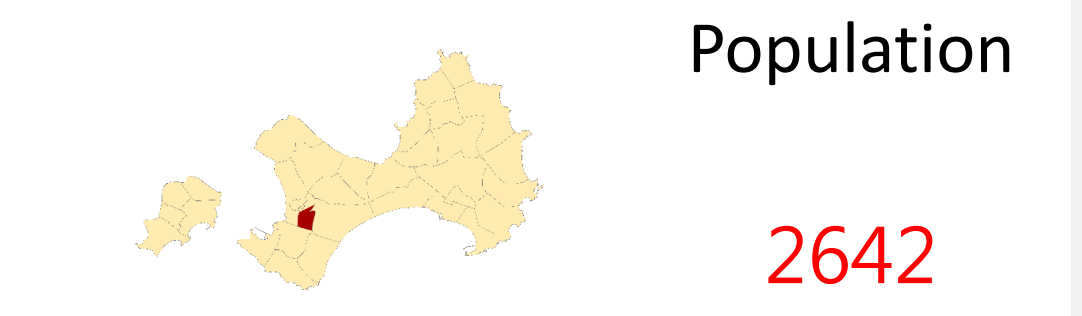
Pushan Village Emergency Evacuation Map(Jinsha Township, Kinmen County)

NO. 0902002-008



INFORMATION

Location



Population
2642

Emergency Telephone No.

- Emergency Operations Center
- TEL ☎ (082)-352150
- Jinsha Police Station
- TEL ☎ (082)-352260
- Jinsha Branch,
- Kinmen County Fire Bureau
- TEL ☎ (082)-352269
- Manager : Jia-Cai , Chou
- TEL ☎ 0932-817759.362848

Website for Emergency

- National Fire Agency ◆
- <http://www.nfa.gov.tw>
- Kinmen County Fire Bureau ◆
- <http://www.kfb.gov.tw/>
- Jinsha Township Administration ◆
- <http://www.kinsha.gov.tw/>

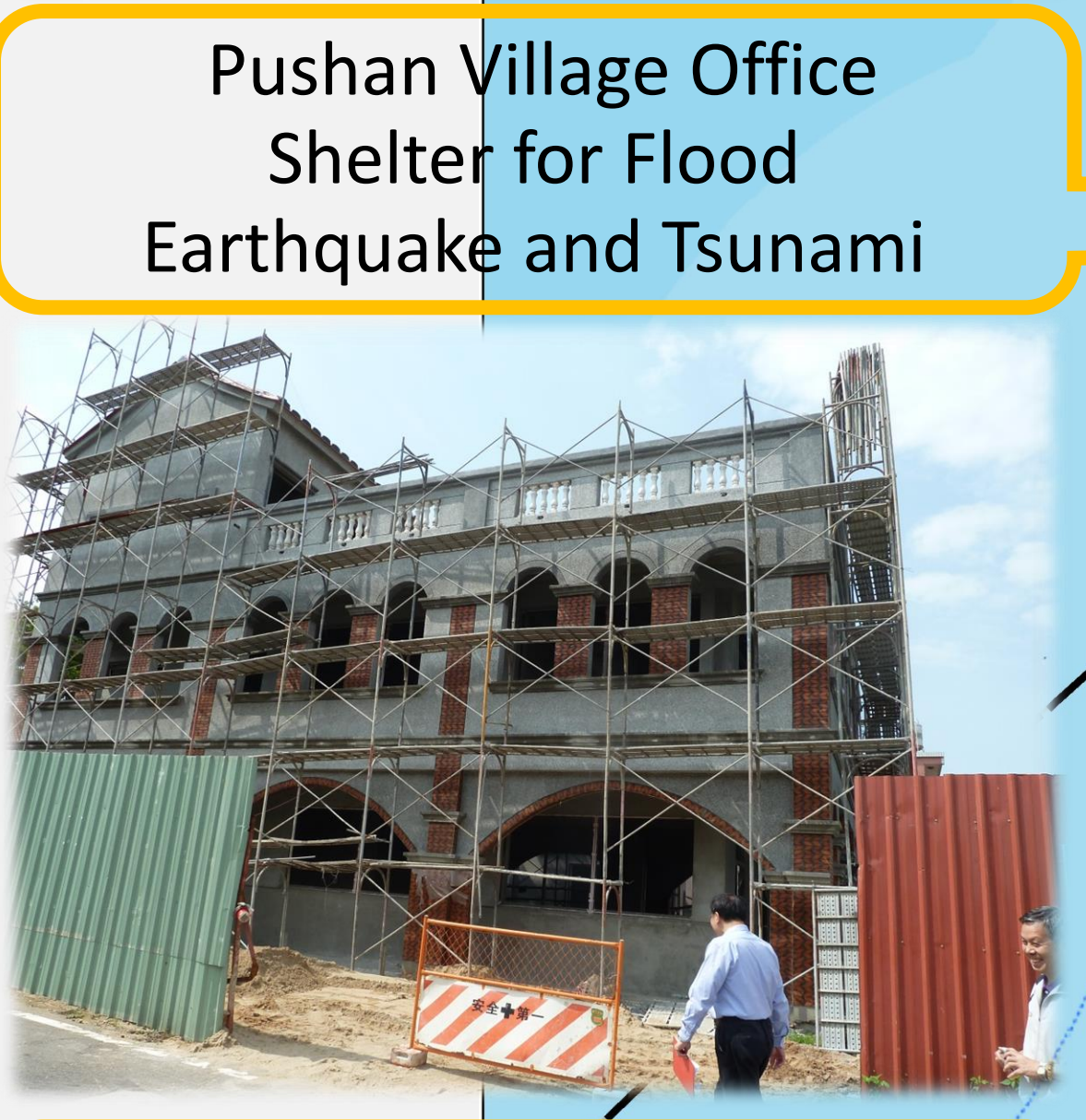
In Case of Disaster

- Earthquake 🔍 Find open ground
- Flood or Tsunami 🔍 Go higher ground or take vertical evacuation measures

Emergency Shelter

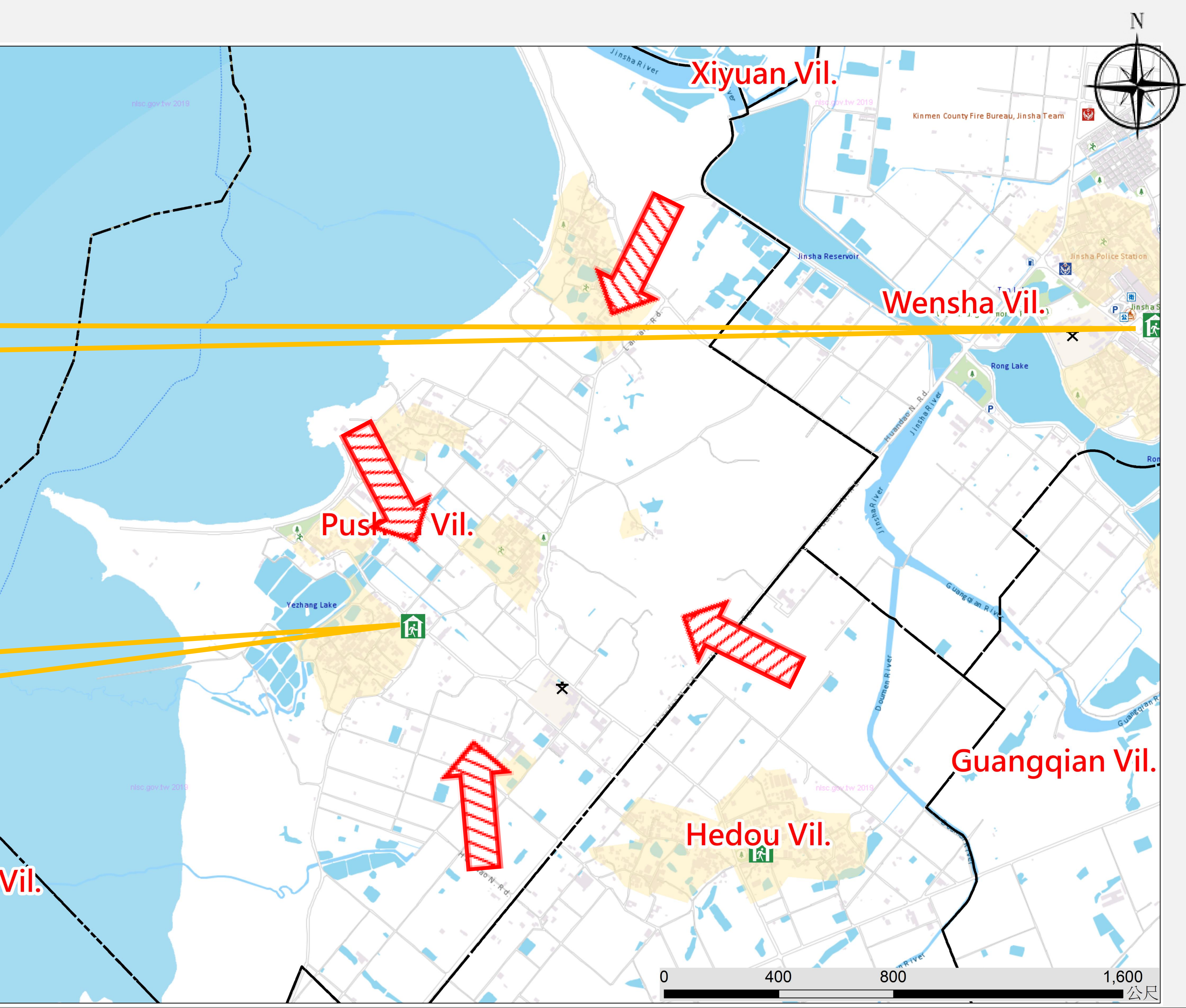
- ➔ Pushan Village Office
- No.4-3, Pubian, Jinsha
- Township, Kinmen County
- 890,Taiwan (R.O.C.)
- TEL ☎ 0932-817759.352859
- ➔ Jinsha Township Administration
- No.112,Sec.1, Huandao E.Rd.,
- JinshaTownship , Kinmen County
- 890,Taiwan (R.O.C.)
- TEL ☎ 0910-381150

Made by Fire Bureau , Kinmen county on JUN., 2024



Pushan Village Office
Shelter for Flood
Earthquake and Tsunami

Jinsha Township Administration
Shelter for Flood
Earthquake and Tsunami



Legend

Administrative Zone	Signs	Facilities
<ul style="list-style-type: none"> --- Township --- Village — Township route — Rural road — County route 	<ul style="list-style-type: none"> 🌊 River 🚒 Emergency Shelter(Earthquake) 💧 Emergency Shelter (Flood) 🌊 Emergency Shelter (Tsunami) 🚑 Emergency Operation Center 	<ul style="list-style-type: none"> 🚁 Helicopter landing field 🚚 Vehicle and personnel Rendezvous point 🏠 Emergency relief supplies storage 👮 Police station 👨‍🚒 Firefighting Unit 🌸 Landmark 🏠 Indoor shelter 🚶 Outdoor shelter 🏢 Township office 🏘 Village office 🎓 School 🌳 Park 📮 Post office 🏥 Public health center ♿ Welfare institution ⚠ Warning signs 🛢 Gas station 📶 Chunghua Telecom