

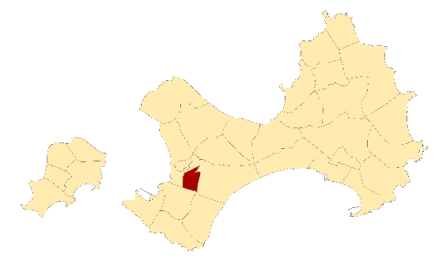
Xinshi Village Emergency Evacuation Map (Jinhu Township, Kinmen County)

NO. 0902003-001



INFORMATION

Location



Population

4397

Emergency Telephone No.

- Emergency Operations Center
- TEL (082)-332528
- Jinhu Police Station
- TEL (082)-332559
- Jinhu Branch,
- Kinmen County Fire Bureau
- TEL (082)-332550
- Manager : Zhi-Cheng , Wu
- TEL 0912-540180.332131

Website for Emergency

- National Fire Agency
- <http://www.nfa.gov.tw>
- Kinmen County Fire Bureau
- <http://www.kfb.gov.tw/>
- Jinhu Township Administration
- <http://www.kinsha.gov.tw>

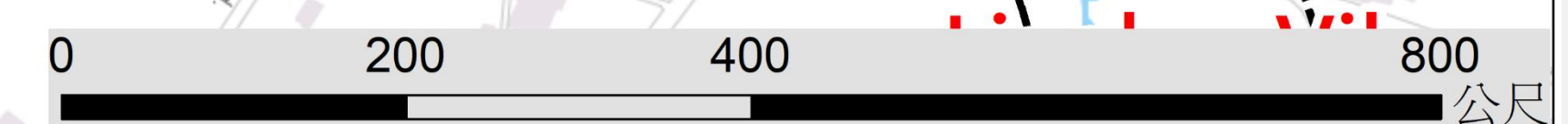
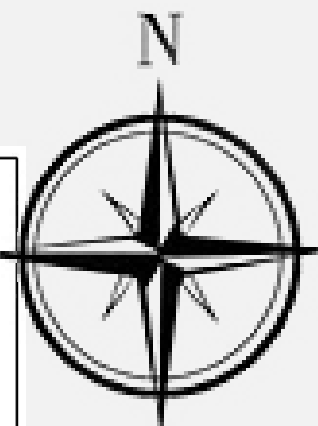
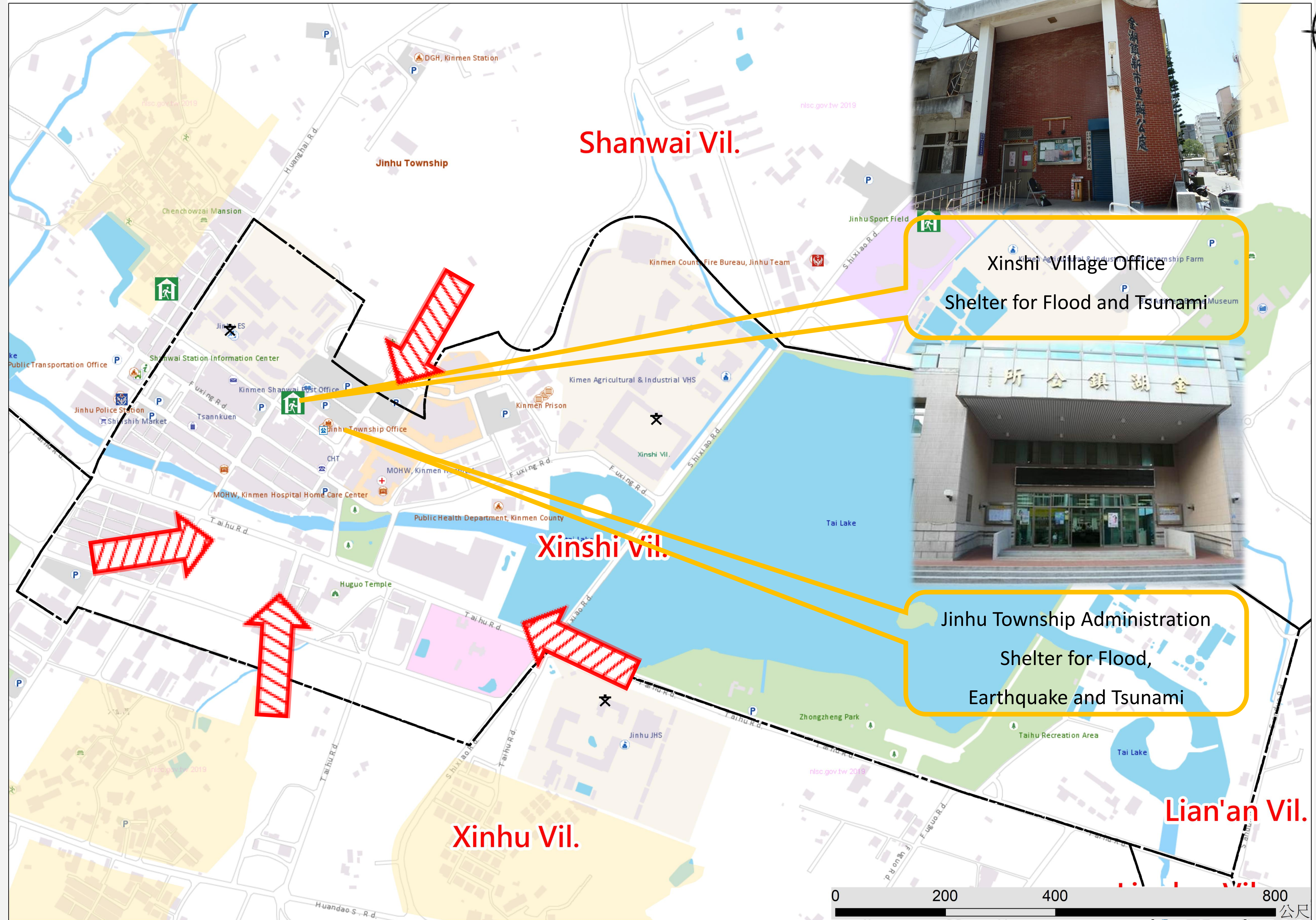
In Case of Disaster

- Earthquake Find open ground
- Flood or Tsunami Go higher ground or take vertical evacuation measures

Emergency Shelter

- Xinshi Village Office
- No.6, Linsen Rd., Jinhu
- Township, Kinmen County
- 891, Taiwan (R.O.C.)
- TEL 0912-540180.332509
- Jinhu Township Administration
- No.2, Linsen Rd., Jinhu
- Township, Kinmen County
- 891, Taiwan (R.O.C.)
- TEL 0912-281431

Made by Fire Bureau ,
Kinmen county
on JUN., 2024



Legend

Administrative Zone	Signs	Facilities
<ul style="list-style-type: none"> --- Township --- Village — Township route — Rural road — County route 	<ul style="list-style-type: none"> Water icon: River Red arrow icon: Evacuation direction Red circle with earthquake icon: Emergency Shelter (Earthquake) Blue circle with water icon: Emergency Shelter (Flood) Blue circle with tsunami icon: Emergency Shelter (Tsunami) Yellow circle with 'EOC' icon: Emergency Operation Center 	<ul style="list-style-type: none"> Blue helicopter icon: Helicopter landing field Green car icon: Vehicle and personnel Rendezvous point Blue house icon: Emergency relief supplies storage Blue police icon: Police station Red fire icon: Firefighting Unit Red flower icon: Landmark Green house icon: Indoor shelter Green person icon: Outdoor shelter Blue building icon: Township office Red building icon: Village office Blue school icon: School Green park icon: Park Green post icon: Post office Blue public health icon: Public health center Blue wheelchair icon: Welfare institution Yellow warning icon: Warning signs Blue gas icon: Gas station Blue telecom icon: Chunghwa Telecom

St
o
r
e

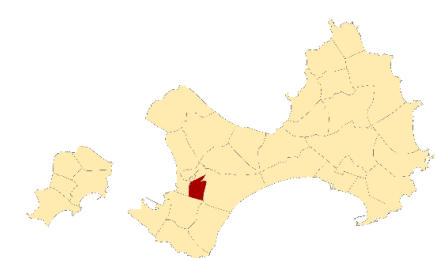
Shanwai Village Emergency Evacuation Map (Jinhu Township, Kinmen County)

NO. 0902003-002



INFORMATION

Location



Population

3912

Emergency Telephone No.

- Emergency Operations Center
- TEL (082)-332528
- Jinhu Police Station
- TEL (082)-332559
- Jinhu Branch,
- Kinmen County Fire Bureau
- TEL (082)-332550
- Manager : Wen-Kai , Chen
- TEL 0937-392960.331183

Website for Emergency

- National Fire Agency
- <http://www.nfa.gov.tw>
- Kinmen County Fire Bureau
- <http://www.kfb.gov.tw/>
- Jinhu Township Administration
- <http://www.kinsha.gov.tw>

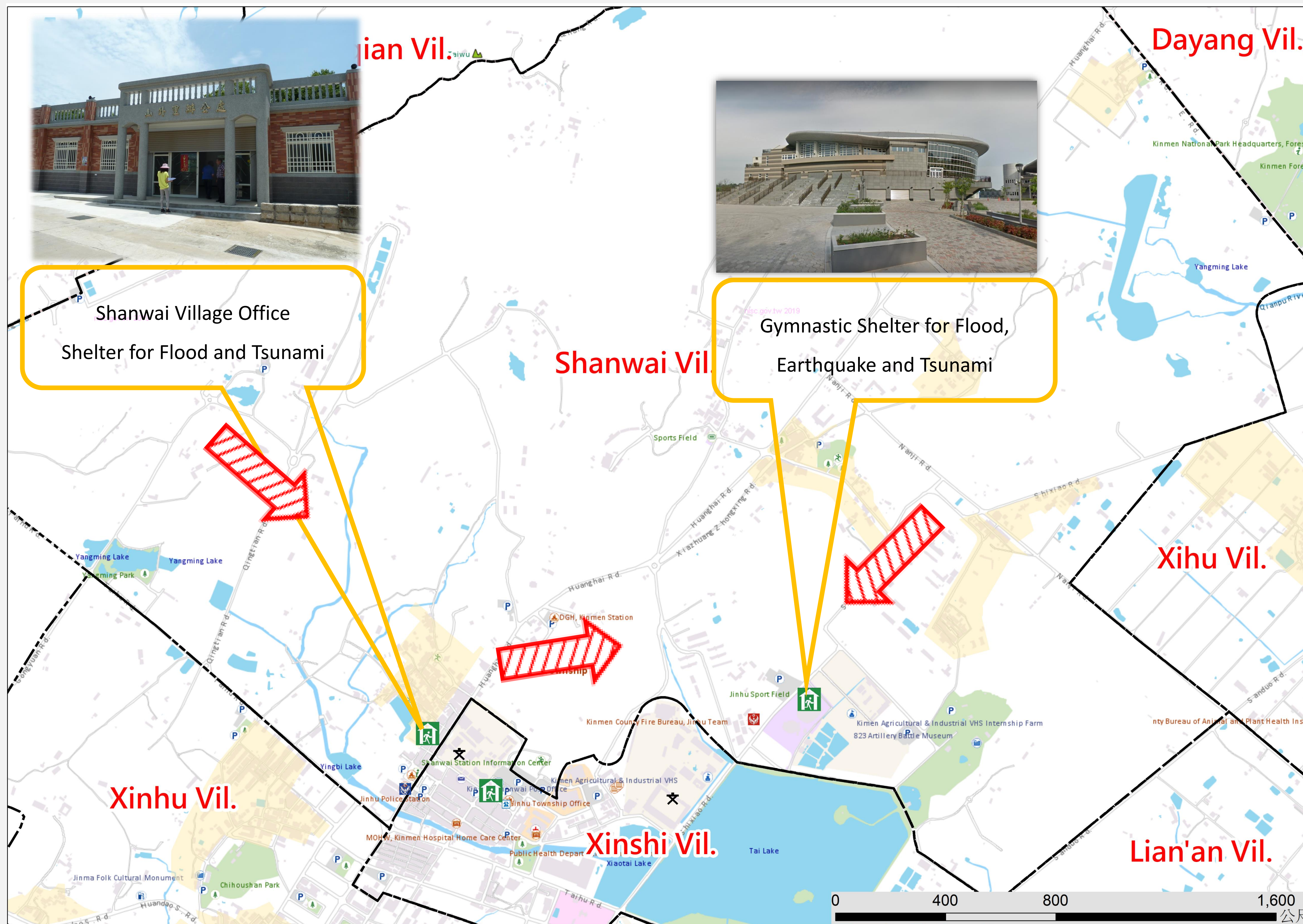
In Case of Disaster

- Earthquake Find open ground
- Flood or Tsunami Go higher ground or take vertical evacuation measures

Emergency Shelter

- ➔ Xinshi Village Office
- No.1-1, Shanwai, Jinhu
- Township, Kinmen County
- 891, Taiwan (R.O.C.)
- TEL 0937-392960.332853
- ➔ Jinhu Township Administration
- No.2, Linsen Rd., Jinhu
- Township, Kinmen County
- 891, Taiwan (R.O.C.)
- TEL 0912-281431

Made by Fire Bureau ,
Kinmen county
on JUN., 2024



Legend

Administrative Zone	Signs	Facilities
<ul style="list-style-type: none"> --- Township --- Village — Township route — Rural road — County route 	<ul style="list-style-type: none"> River Evacuation direction Emergency Shelter (Earthquake) Emergency Shelter (Flood) Emergency Shelter (Tsunami) Emergency Operation Center 	<ul style="list-style-type: none"> Helicopter landing field Vehicle and personnel Rendezvous point Emergency relief supplies storage Police station Firefighting Unit Landmark Indoor shelter Outdoor shelter Township office Village office School Park Post office Public health center Welfare institution Warning signs Gas station Chunghwa Telecom

St
o
r
e

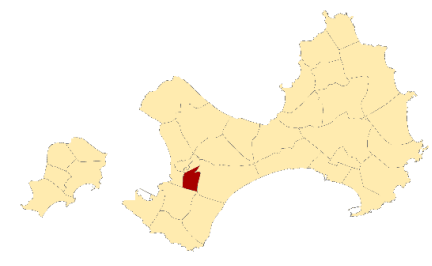
Zhengyi Village Emergency Evacuation Map(Jinhu Township, Kinmen County)

NO. 0902003-003



INFORMATION

Location



Population

2989

Emergency Telephone No.

- Emergency Operations Center
- TEL ☎ (082)-332528
- Jinhu Police Station
- TEL ☎ (082)-332559
- Jinhu Branch,
- Kinmen County Fire Bureau
- TEL ☎ (082)-332550
- Manager : Yan-Wu Chen
- TEL ☎ 0918-917134.333326

Website for Emergency

- National Fire Agency ◆
- <http://www.nfa.gov.tw>
- Kinmen County Fire Bureau ◆
- <http://www.kfb.gov.tw/>
- Jinhu Township Administration ◆
- <http://www.kinsha.gov.tw>

In Case of Disaster

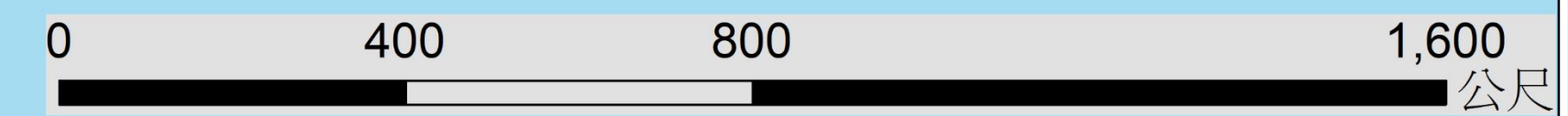
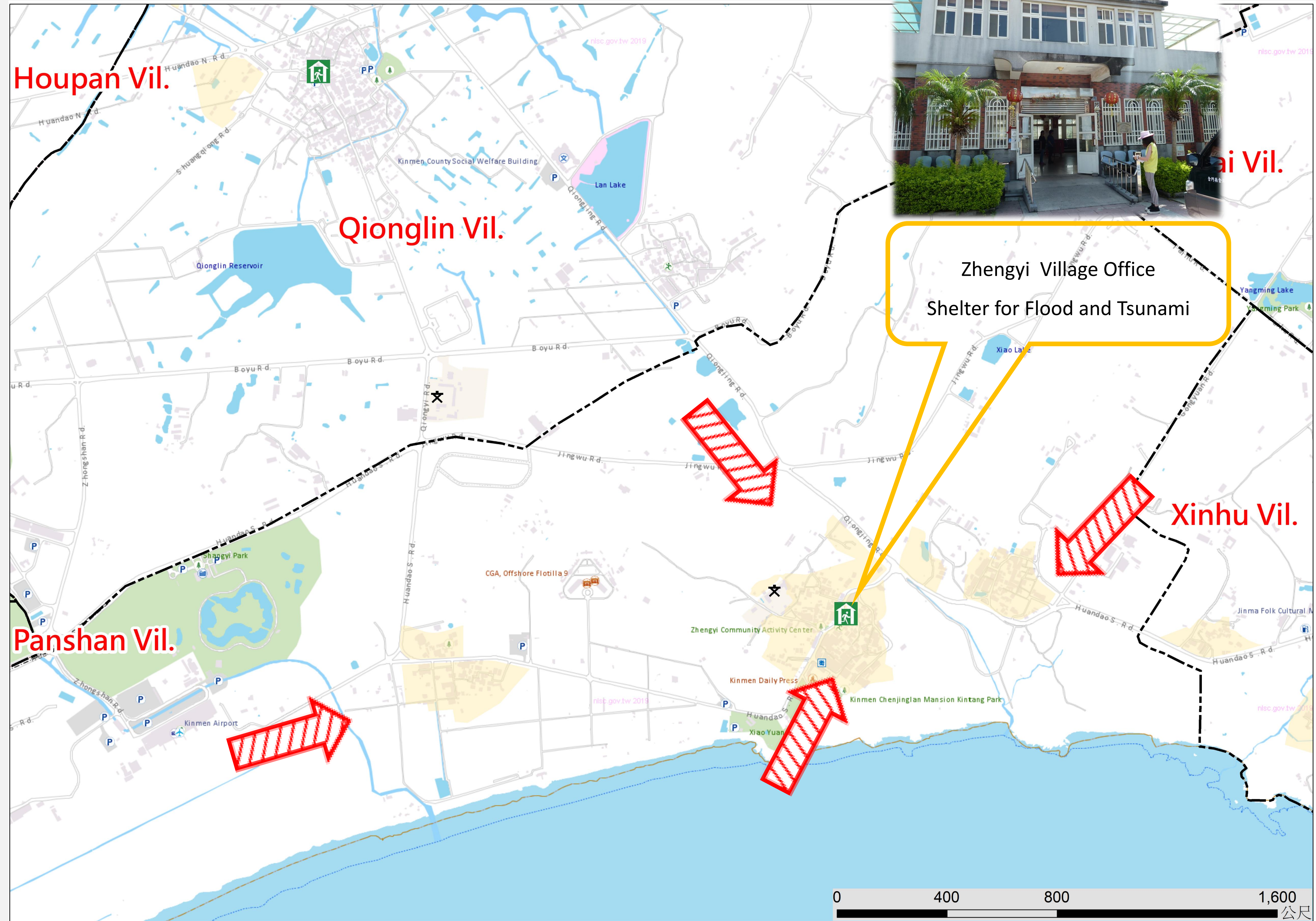
- Earthquake 🔍 Find open ground
- Flood or Tsunami 🔍 Go higher ground or take vertical evacuation measures

Emergency Shelter

- ➔ Zhengyi Village Office
- No.65-1, Chenggong, Jinhu
- Township, Kinmen County
- 891, Taiwan (R.O.C.) 🌊🌊
- TEL ☎ 0918-917134.332452
- ➔ Jinhu Township Administration

- No.2, Linsen Rd., Jinhu
- Township, Kinmen County
- 891, Taiwan (R.O.C.) 🌊🌊🌊
- TEL ☎ 0912-281431

Made by Fire Bureau ,
Kinmen county
on JUN., 2024



Legend

Administrative Zone	Signs	Facilities
<ul style="list-style-type: none"> --- Township --- Village — Township route — Rural road — County route 	<ul style="list-style-type: none"> 🌊 River ➔ Evacuation direction 🏠 Emergency Shelter(Earthquake) 🌊 Emergency Shelter (Flood) 🌊 Emergency Shelter (Tsunami) 🚑 Emergency Operation Center 	<ul style="list-style-type: none"> 🚁 Helicopter landing field 🚒 Firefighting Unit 🌸 Landmark 🏠 Indoor shelter 🚶 Outdoor shelter 🚓 Police station 🚒 Firefighting Unit 🌸 Landmark 🏠 Indoor shelter 🚶 Outdoor shelter 🏢 Township office 🏠 Village office 🎓 School 🌳 Park 📮 Post office 🏠 Public health center ♿ Welfare institution ⚠ Warning signs 🛢 Gas station 📶 Chunghwa Telecom

St
o
r
e

Liaolo Village Emergency Evacuation Map(Jinhu Township, Kinmen County)

NO. 0902003-004



INFORMATION

Location

Population

2541

Emergency Telephone No.

- Emergency Operations Center
- TEL ☎ (082)-332528
- Jinhu Police Station
- TEL ☎ (082)-332559
- Jinhu Branch,
- Kinmen County Fire Bureau
- TEL ☎ (082)-332550
- Manager : Qing-Ge , Xie
- TEL ☎ 0926-107040.331732

Website for Emergency

- National Fire Agency ◆
<http://www.nfa.gov.tw>
- Kinmen County Fire Bureau ◆
<http://www.kfb.gov.tw/>
- Jinhu Township Administration ◆
<http://www.kinsha.gov.tw>

In Case of Disaster

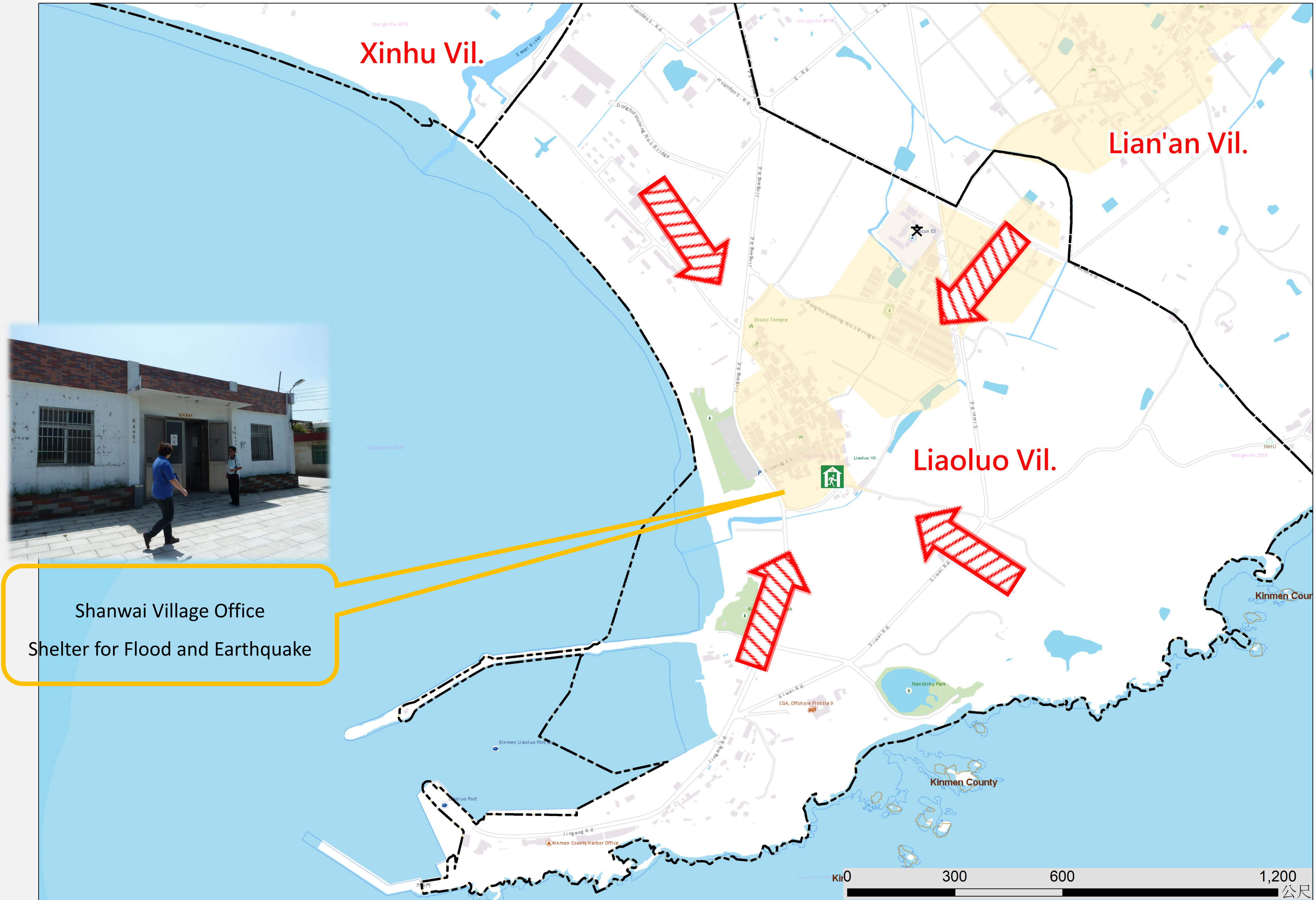
- Earthquake 🔍 Find open ground
- Flood or Tsunami 🔍 Go higher ground or take vertical evacuation measures

Emergency Shelter

- ➔ Liaolo Village Office
- No.16-4, Liaoluo, Jinhu
- Township, Kinmen County
- 891 , Taiwan (R.O.C.) 🌊🌊
- TEL ☎ 0926-107040.332168
- ➔ Jinhu Township Administration

- No.2, Linsen Rd., Jinhu
- Township, Kinmen County
- 891, Taiwan (R.O.C.)
- TEL ☎ 0912-281431 🌊🌊🌊

Made by Fire Bureau ,
Kinmen county
on JUN., 2024



Legend						
Administrative Zone	Signs	Facilities				
--- Township	🌊 River	➔ Evacuation direction	🚁 Helicopter landing field	👮 Police station	🏢 Township office	🏠 Public health center
--- Village		🚒 Emergency Shelter(Earthquake)	🚚 Vehicle and personnel Rendezvous point	👨 Firefighting Unit	🏠 Village office	♿ Welfare institution
— Township route		🌊 Emergency Shelter (Flood)	🏠 Emergency relief supplies storage	🌸 Landmark	🎓 School	⚠ Warning signs
— Rural road		🌊 Emergency Shelter (Tsunami)		🏡 Indoor shelter	🌳 Park	🛢 Gas station
— County route		🚚 Emergency Operation Center		🚶 Outdoor shelter	📮 Post office	📶 Chungghwa Telecom

Store

Qionglin Village Emergency Evacuation Map(Jinhu Township, Kinmen County)

NO. 0902003-005



INFORMATION

Location

Population

3939

Emergency Telephone No.

- Emergency Operations Center
- TEL ☎ (082)-332528
- Jinhu Police Station
- TEL ☎ (082)-332559
- Jinhu Branch,
- Kinmen County Fire Bureau
- TEL ☎ (082)-332550
- Manager : Xian-Ming , Cai
- TEL ☎ 0935-332913.332913

Website for Emergency

- National Fire Agency ◆
- <http://www.nfa.gov.tw>
- Kinmen County Fire Bureau ◆
- <http://www.kfb.gov.tw/>
- Jinhu Township Administration ◆
- <http://www.kinsha.gov.tw>

In Case of Disaster

- Earthquake 🔍 Find open ground
- Flood or Tsunami 🔍 Go higher ground or take vertical evacuation measures

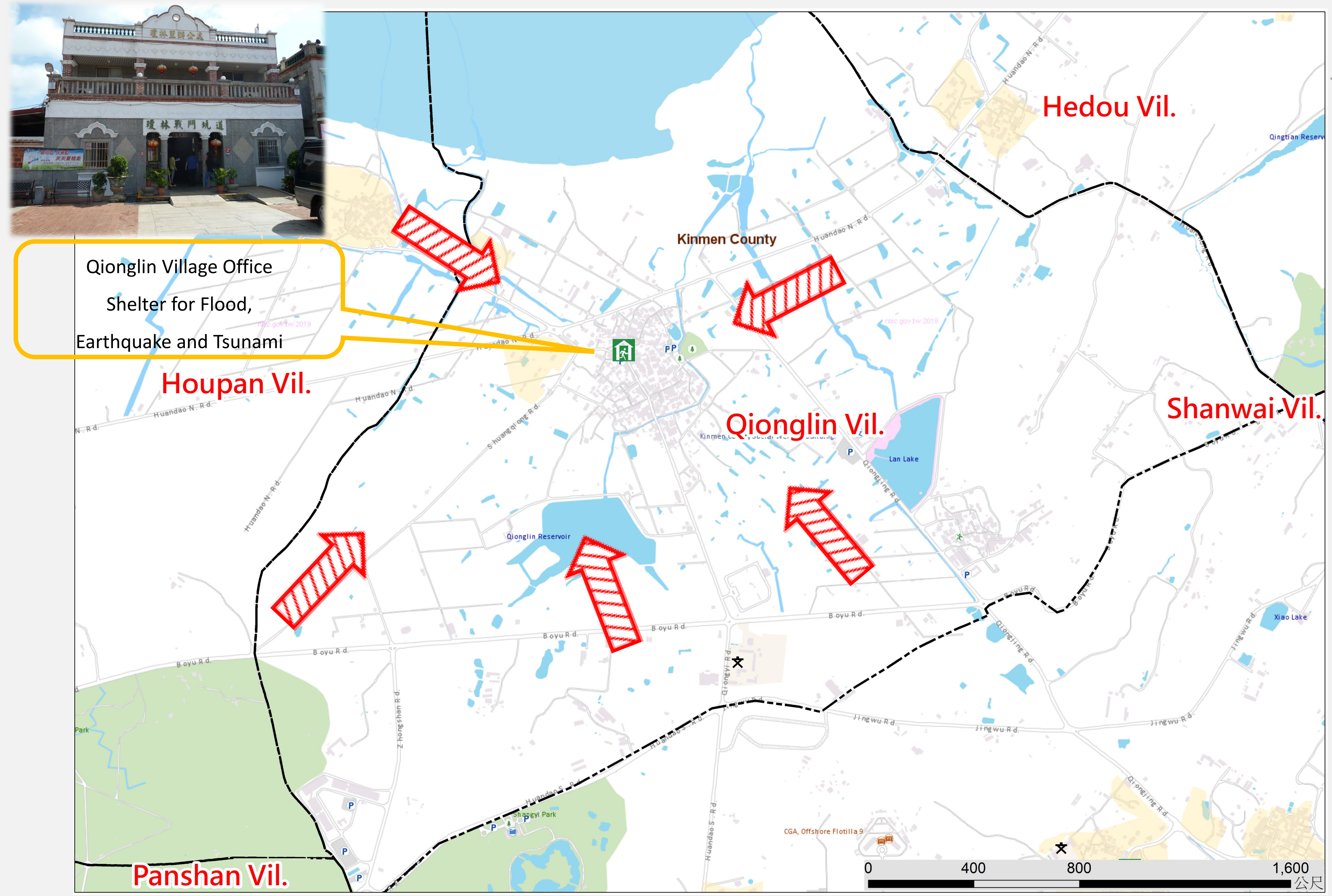
Emergency Shelter

- ➔ Qionglin Village Office
- No.236-1, Qionglin, Jinhu
- Township, Kinmen County
- 891 , Taiwan (R.O.C.)
- TEL ☎ 0935-332913.332164
- ➔ Jinhu Township Administration
- No.2, Linsen Rd., Jinhu
- Township, Kinmen County
- 891,Taiwan (R.O.C.)
- TEL ☎ 0912-281431

Made by Fire Bureau , Kinmen county on JUN., 2024



Qionglin Village Office
Shelter for Flood,
Earthquake and Tsunami



Legend

Administrative Zone	Signs	Facilities
<ul style="list-style-type: none"> --- Township --- Village — Township route — Rural road — County route 	<ul style="list-style-type: none"> 🌊 River ➔ Evacuation direction 🏠 Emergency Shelter(Earthquake) 💧 Emergency Shelter (Flood) 🌊 Emergency Shelter (Tsunami) 🚒 Emergency Operation Center 	<ul style="list-style-type: none"> 🚁 Helicopter landing field 🚒 Firefighting Unit 🌸 Landmark 🏠 Indoor shelter 🚶 Outdoor shelter 👮 Police station 📄 Township office 🏫 School 🏡 Park 📮 Post office 🏥 Public health center ♿ Welfare institution ⚠ Warning signs 🛢 Gas station 📶 Chunghua Telecom

St
o
r
e

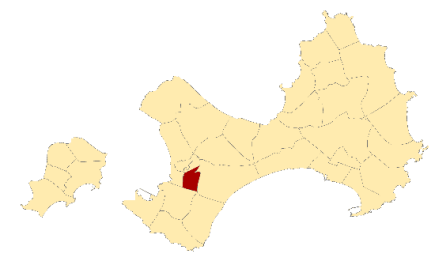
Xinhu Village Emergency Evacuation Map(Jinhu Township, Kinmen County)

NO. 0902003-006



INFORMATION

Location



Population

9652

Emergency Telephone No.

- Emergency Operations Center
- TEL (082)-332528
- Jinhu Police Station
- TEL (082)-332559
- Jinhu Branch,
- Kinmen County Fire Bureau
- TEL (082)-332550
- Manager : CHEN,YING-JHANG
- TEL 0932-848216.332528

Website for Emergency

- National Fire Agency
- <http://www.nfa.gov.tw>
- Kinmen County Fire Bureau
- <http://www.kfb.gov.tw/>
- Jinhu Township Administration
- <http://www.kinsha.gov.tw>

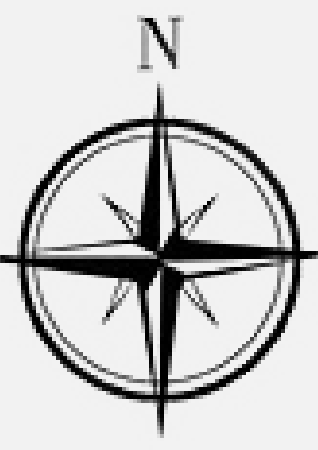
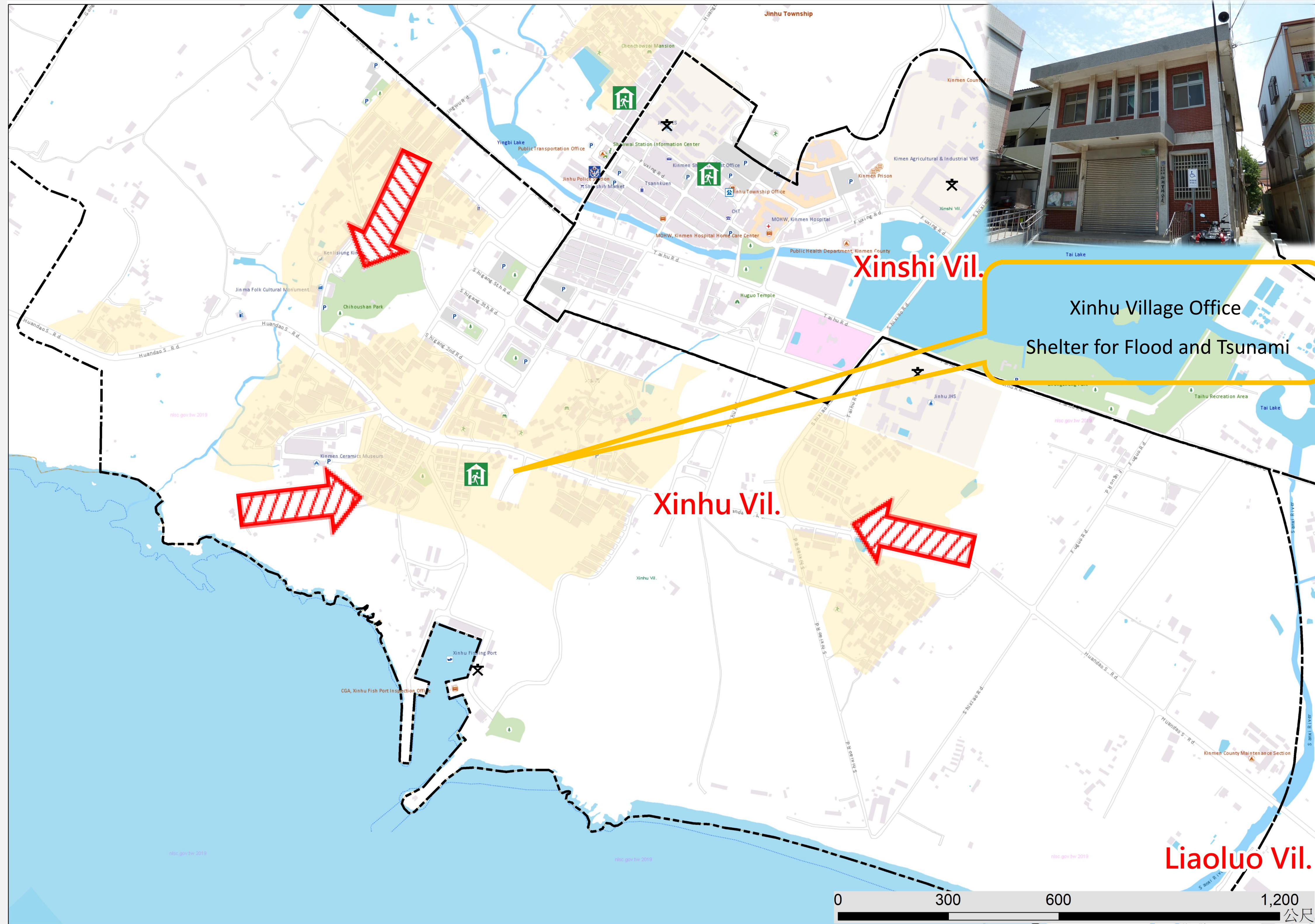
In Case of Disaster

- Earthquake Find open ground
- Flood or Tsunami Go higher ground or take vertical evacuation measures

Emergency Shelter

- Xinhu Village Office
- No.62-1, Huqian, Jinhu
- Township, Kinmen County
- 891, Taiwan (R.O.C.)
- TEL 0932-838600.332263
- Jinhu Township Administration
- No.2, Linsen Rd., Jinhu
- Township, Kinmen County
- 891, Taiwan (R.O.C.)
- TEL 0912-281431

Made by Fire Bureau,
Kinmen county
on JUN., 2024



Legend

Administrative Zone	Signs	Facilities
Township	River	Evacuation direction
Village	Emergency Shelter(Earthquake)	Vehicle and personnel Rendezvous point
Township route	Emergency Shelter (Flood)	Emergency relief supplies storage
Rural road	Emergency Shelter (Tsunami)	Helicopter landing field
County route	Emergency Operation Center	Police station
		Firefighting Unit
		Landmark
		Indoor shelter
		Outdoor shelter
		Township office
		Village office
		School
		Park
		Post office
		Public health center
		Welfare institution
		Warning signs
		Gas station
		Chunghwa Telecom

Store

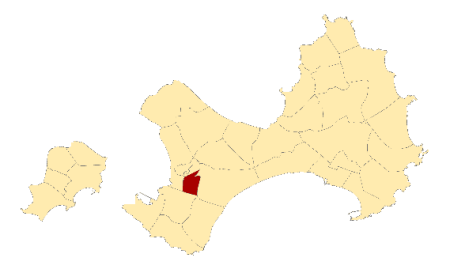
Xihu Village Emergency Evacuation Map (Jinhu Township, Kinmen County)

NO. 0902003-007



INFORMATION

Location



Population

1847

Emergency Telephone No.

- Emergency Operations Center
- TEL ☎ (082)-332528
- Jinhu Police Station
- TEL ☎ (082)-332559
- Jinhu Branch,
- Kinmen County Fire Bureau
- TEL ☎ (082)-332550
- Manager : HUANG, JIAN-JHONG
- TEL ☎ 0927-190662.332529

Website for Emergency

- National Fire Agency ◆
- <http://www.nfa.gov.tw>
- Kinmen County Fire Bureau ◆
- <http://www.kfb.gov.tw/>
- Jinhu Township Administration ◆
- <http://www.kinsha.gov.tw>

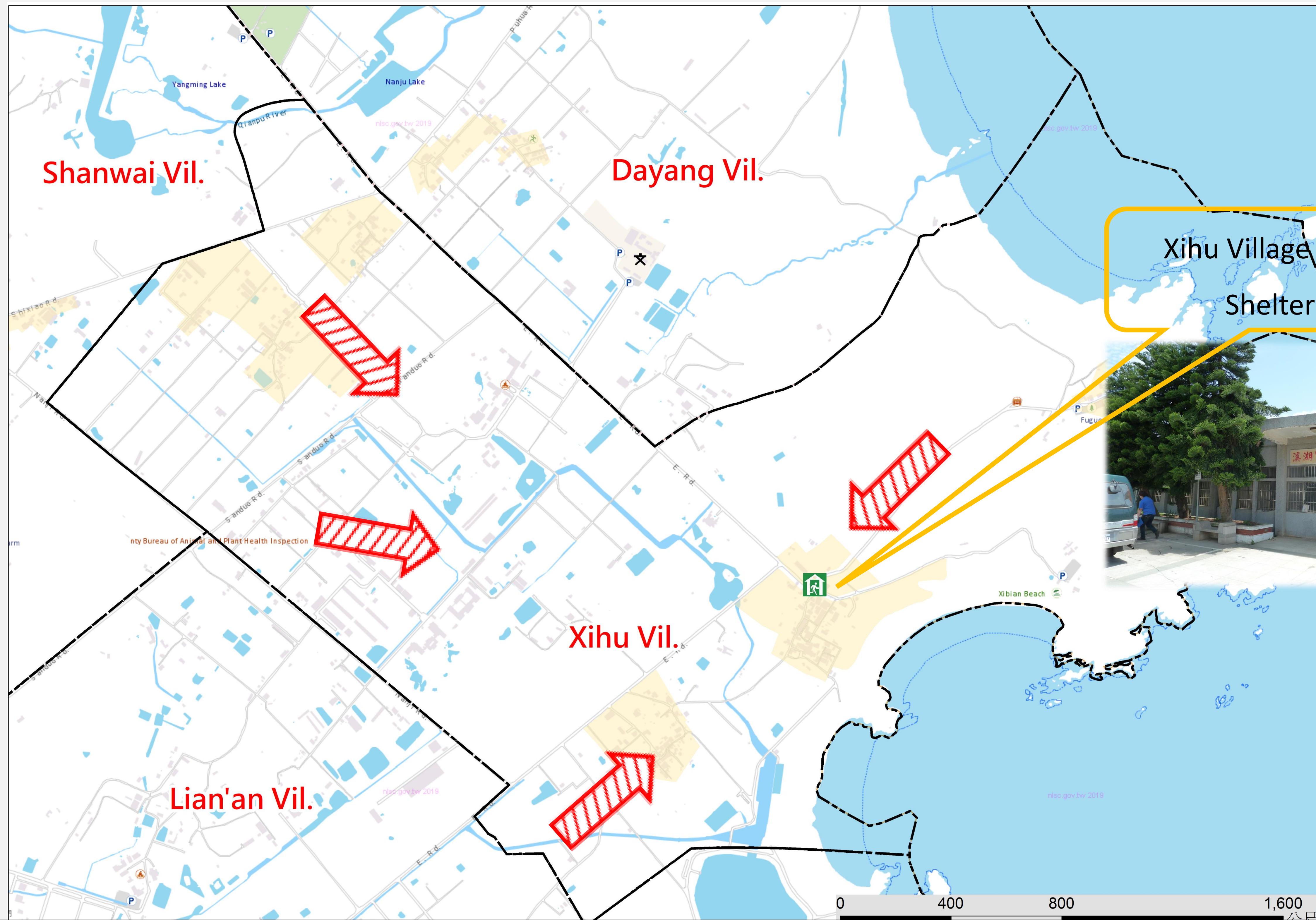
In Case of Disaster

- Earthquake 🔍 Find open ground
- Flood or Tsunami 🔍 Go higher ground or take vertical evacuation measures

Emergency Shelter

- ➔ Xinshi Village Office
- No.1-1, Shanwai, Jinhu
- Township, Kinmen County
- 891, Taiwan (R.O.C.) 🌊
- TEL ☎ 0932-838861.332426
- ➔ Jinhu Township Administration
- No.2, Linsen Rd., Jinhu
- Township, Kinmen County
- 891, Taiwan (R.O.C.) 🌊🌪️🌊
- TEL ☎ 0912-281431

Made by Fire Bureau, Kinmen county on JUN., 2024



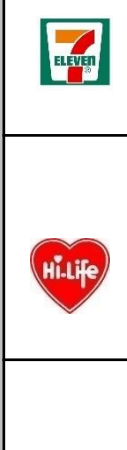
Xihu Village Office Shelter for Flood



Legend

Administrative Zone	Signs	Facilities
<ul style="list-style-type: none"> --- Township --- Village — Township route — Rural road — County route 	<ul style="list-style-type: none"> 🌊 River ➔ Evacuation direction 🏠 Emergency Shelter (Earthquake) 🌊 Emergency Shelter (Flood) 🌊 Emergency Shelter (Tsunami) 🚑 Emergency Operation Center 	<ul style="list-style-type: none"> 🚁 Helicopter landing field 🚒 Firefighting Unit 🌸 Landmark 🏠 Indoor shelter 🚶 Outdoor shelter 🚓 Police station 🚒 Firefighting Unit 🌸 Landmark 🏠 Indoor shelter 🚶 Outdoor shelter 🏢 Township office 🏠 Village office 🎓 School 🌳 Park 📮 Post office 🏠 Public health center ♿ Welfare institution ⚠ Warning signs 🛢 Gas station 📶 Chunghua Telecom

Store



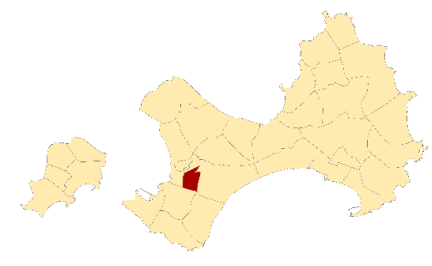
Lianan Village Emergency Evacuation Map(Jinhu Township, Kinmen County)

NO. 0902003-008



INFORMATION

Location



Population

1952

Emergency Telephone No.

- Emergency Operations Center
- TEL ☎ (082)-332528
- Jinhu Police Station
- TEL ☎ (082)-332559
- Jinhu Branch,
- Kinmen County Fire Bureau
- TEL ☎ (082)-332550
- Manager : LYU,YONG-LIN
- TEL ☎ 0909-318825.332265

Website for Emergency

National Fire Agency ◆

● <http://www.nfa.gov.tw>

Kinmen County Fire Bureau ◆

● <http://www.kfb.gov.tw/>

Jinhu Township Administration ◆

● <http://www.kinsha.gov.tw>

In Case of Disaster

- Earthquake 🔍 Find open ground
- Flood or Tsunami 🔍 Go higher ground or take vertical evacuation measures

Emergency Shelter

➔ Lianan Village Office

● No.43, E. Vil., Jinhu

● Township, Kinmen County

● 891, Taiwan (R.O.C.)



● TEL ☎ 332265.332528

➔ Jinhu Township Administration

● No.2, Linsen Rd., Jinhu

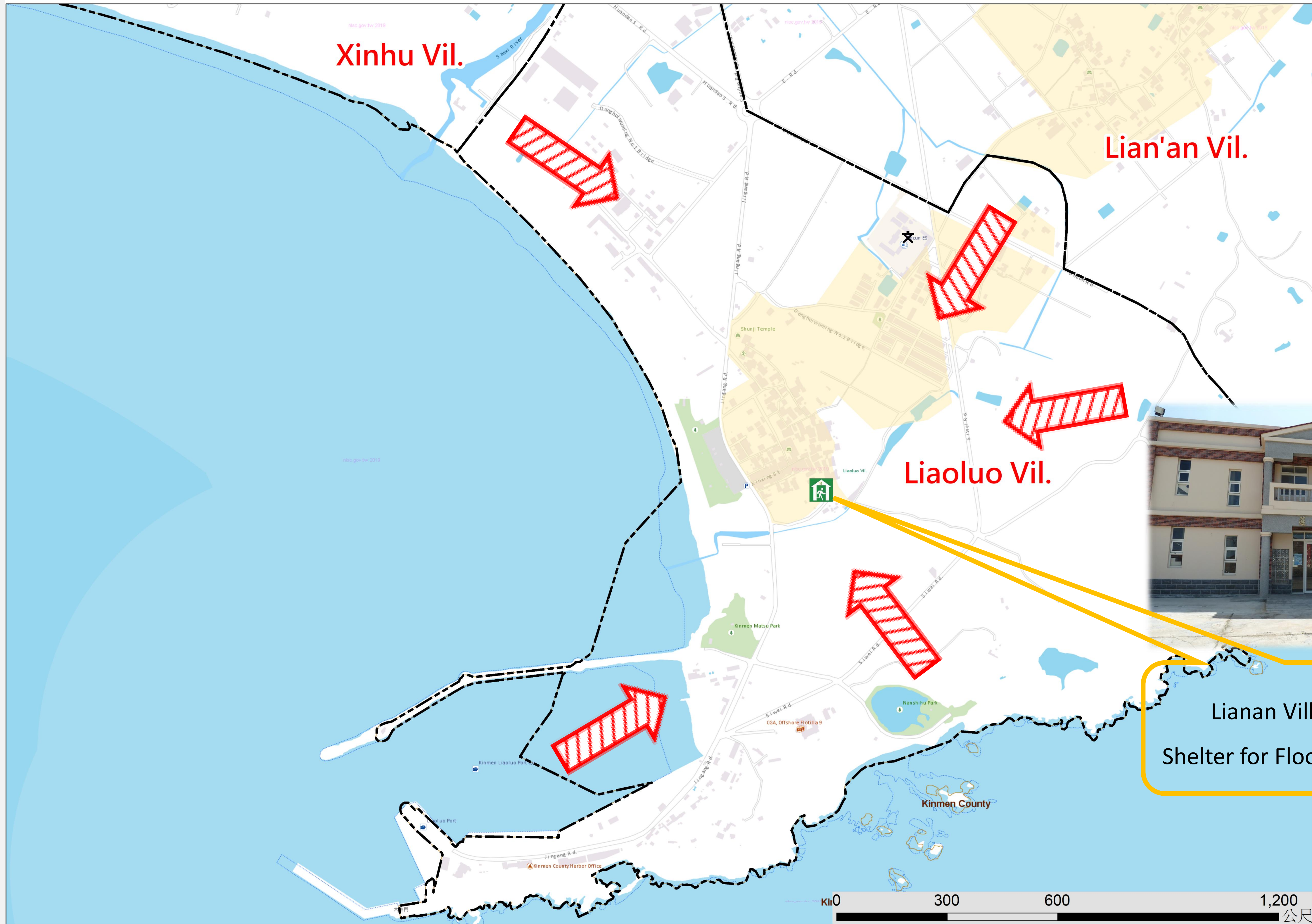
● Township, Kinmen County

● 891, Taiwan (R.O.C.)

● TEL ☎ 0912-281431



Made by Fire Bureau,
Kinmen county
on JUN., 2024



Lianan Village Office
Shelter for Flood and Tsunami

Legend

Administrative Zone	Signs	Facilities
<ul style="list-style-type: none"> --- Township --- Village — Township route — Rural road — County route 	<ul style="list-style-type: none"> 🌊 River ➔ Evacuation direction 🏠 Emergency Shelter(Earthquake) 💧 Emergency Shelter (Flood) 🌊 Emergency Shelter (Tsunami) 🚑 Emergency Operation Center 	<ul style="list-style-type: none"> 🚁 Helicopter landing field 🚚 Vehicle and personnel Rendezvous point 🏠 Emergency relief supplies storage 👮 Police station 👦 Firefighting Unit 🌸 Landmark 🏠 Indoor shelter 🚶 Outdoor shelter 🏢 Township office 🏠 Village office 🎓 School 🌳 Park 📮 Post office 🏠 Public health center ♿ Welfare institution ⚠ Warning signs 🛢 Gas station 📶 Chunghua Telecom

Store

